

June 9, 1997

Introduced By: Christopher Vance  
Jane Hague

pctrev/de

Proposed No.: 97-304

ORDINANCE NO. **12771**

1  
2  
3  
4  
5  
6  
7  
8  
9  
10  
11  
12  
13  
14  
15  
16  
17  
18  
19  
20

AN ORDINANCE adopting the revision of voting precincts of King County for the year 1997 and declaring and emergency.

BE IT ORDAINED BY THE COUNCIL OF KING COUNTY:

SECTION 1. Pursuant to K.C.C. 1.12.010.E and RCW 29.04.040, the 1997 revisions and alterations to the King County voting precincts as contained in the attachment to this ordinance are adopted and shall constitute an amendment to the official list of county voting precincts maintained by the records and elections division.

1            SECTION 2. The county council finds as a fact and  
2 declares that an emergency exists and that this ordinance is  
3 necessary for the immediate preservation of public peace,  
4 health, or safety or for the support of county government and  
5 its existing institutions.

6            INTRODUCED AND READ for the first time this 27<sup>th</sup>  
7 day of May, 1997.

8            PASSED by a vote of 12 to 0 this 16<sup>th</sup> day of  
9 June, 1997.

10            KING COUNTY COUNCIL  
11            KING COUNTY, WASHINGTON

12            Louise Miller  
13            ~~Vice~~ Chair

14            ATTEST:

15            Jaime Masano  
16            Deputy Clerk of the Council

17            APPROVED this 26<sup>th</sup> day of June, 1997.

18            [Signature]  
19            Deputy King County Executive

20            Attachments: 1997 Voting Precinct Alteration Summary

**12771**

**KING COUNTY RECORDS AND ELECTIONS DIVISION**

**1997 VOTING PRECINCT ALTERATION  
SUMMARY**

List of all King County voting precincts by Council District identifying those which are altered or adjusted.

**ATTACHMENT TO ORDINANCE NO. \_\_\_\_\_**

## INTRODUCTION

The purpose of this package is to provide you with information regarding election precinct changes and technical boundary adjustments made within your King County Council District. The package consists of:

- An alphabetical/numerical summary listing precincts which were, altered, adjusted, or experienced name changes due to incorporations within your district.
- Individual maps of altered and adjusted precincts within your district illustrating changes and trade-offs with adjoining precincts.

Precinct alterations were made to accommodate the following:

- Accommodation of city boundary changes as a result of recent incorporations and annexations.
- Adjustments of precinct boundaries to coincide with census geography and the county wide Geographic Information System (GIS) base map.

Every attempt was made to follow visible, physical geographic features found on the most current TIGER maps provided by the U. S. Census Bureau and the county wide GIS base map.

All of the precinct alterations being proposed must be approved and effective prior to the statutory deadline of June 28, 1997. The County is prohibited from making precinct boundary changes between the thirtieth day prior to the candidate filing period and the end of the general election year.

If you have any questions concerning this proposal described in this package, please do not hesitate to call Bob Bruce, Superintendent of Elections at 296-1540.

1997 Precinct Alteration Summary  
Sorted by KCC

12771

New Code	New or Altered Precinct	LEG	CONG	KCC	Code	Old Name	Comment
2129	SEA 46-2129	46	1	4	2129	SEA-46-2129	
2129	SEA 46-2129	46	1	4	3251	SEA 46-3251*	
3054	FED 30-3054	30	9	7	3055	FED 30-3055	
3054	FED 30-3054	30	9	7	3054	FED 30-3054	
3055	FED 30-3055	30	9	7	3055	FED 30-3055	
3234	FED 30-3234	30	9	7	3234	FED 30-3234	
3237	FED 30-3237	30	9	7	3237	FED 30-3237	
3372	FED 30-3372	30	9	7	3234	FED 30-3234	
3372	FED 30-3372	30	9	7	3237	FED 30-3237	
279	COV 47-0279	47	8	9	279	BURWOOD	
279	COV 47-0279	47	8	9	343	COVINGTON	
566	COV 47-0566	47	8	9	566	JUNE	N/C
1127	COV 47-1127	47	8	9	1127	SUNCREST	N/C
1145	COV 47-1145	47	8	9	493	HAM LAKE	
1145	COV 47-1145	47	8	9	1145	TERRACE PARK	
1203	COV 47-1203	47	8	9	1203	WAX ROAD	N/C
2843	COV 47-2843	47	8	9	2843	LEIGH	
2843	COV 47-2843	47	8	9	688	LITTLE SOOS	
3279	COV 47-3279	47	8	9	3279	JOSEPH	N/C
493	HAM LAKE	47	8	9	493	HAM LAKE	
493	HAM LAKE	47	8	9	1145	TERRACE PARK	
343	JENKINS CREEK	47	8	9	343	COVINGTON	
688	LITTLE SOOS	47	8	9	688	LITTLE SOOS	
2614	M-V 05-2614	5	8	9	932	RAVENSDALE	
2614	M-V 05-2614	5	8	9	2614	SUMMIT	
3272	M-V 05-3272	5	8	9	3272	KRAMER	N/C
3367	M-V 05-3367	5	8	9	932	RAVENSDALE	
3367	M-V 05-3367	5	8	9	2614	SUMMIT	
932	RAVENSDALE	5	8	9	932	RAVENSDALE	
3084	BEL 41-3084	41	8	12	3084	BEL 41-3084	
3370	BEL 41-3370	41	8	12	3084	BEL 41-3084	
3371	BEL 41-3371	41	8	12	3084	BEL 41-3084	
3294	BITTERROOT	5	8	12	3294	BITTERROOT	
3294	BITTERROOT	5	8	12	2400	FIRLAND*	
313	COV 47-0313	47	8	12	313	CHEROKEE	
1153	COV 47-1153	47	8	12	1153	TIMBERLANE	
1153	COV 47-1153	47	8	12	2846	WINTERWOOD	
2390	COV 47-2390	47	8	12	2390	CHIEFTAIN	N/C
2586	COV 47-2586	47	8	12	2586	SANDERS	N/C
2982	COV 47-2982	47	8	12	2982	APPALOOSA	N/C
3244	COV 47-3244	47	8	12	3244	BLACK RIVER	
3365	COV 47-3365	47	8	12	313	CHEROKEE	
3365	COV 47-3365	47	8	12	3322	SASKATOON	
2406	FRANCIS	5	8	12	2406	MAPLE VALLEY	N/C
3295	LUND	47	8	12	3244	BLACK RIVER	
3295	LUND	47	8	12	2841	HEATH	
3295	LUND	47	8	12	3295	LUND	
1218	M-V 05-1218	5	8	12	1218	WILDERNESS	N/C
2857	M-V 05-2857	5	8	12	2857	FERNWOOD	
3245	M-V 05-3245	5	8	12	3245	ROCK CREEK	
3368	M-V 05-3368	5	8	12	3294	BITTERROOT	
3368	M-V 05-3368	5	8	12	2857	FERNWOOD	

\* Abolished



## PRECINCT ALTERATIONS 1997

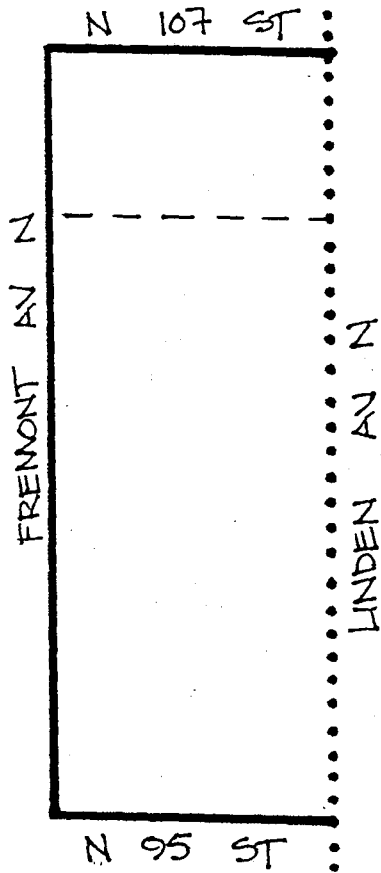
The following is a summary of the precinct changes made in the 1997 Precinct Alteration Project:

Total number of precincts involved	57
Name changes only*	13
Precincts altered	32
Precincts added	10
Precincts deleted	2
Net gain/loss of precincts	+8
<hr/>	
Total precincts	2,682

*NOTE: Precincts which are within an incorporation or municipal annexation change from a named precinct to a alpha-numeric precinct with the city prefix as the alpha part.*

Changes by Council District:

Council District	Altered	Added
1		
2		
3		
4	1	0
5		
6		
7	4	1
8		
9	10	1
10		
11		
12	15	8
13	2	0



# 1997 PRECINCT ALTERATION

Code	Precinct Name	LG	CG	CC	JU
2129	SEA 46-2129	46	1	4	EE
2129	SEA 46-2129	46	1	4	EE
3251	SEA 46-3251*	46	1	4	EE

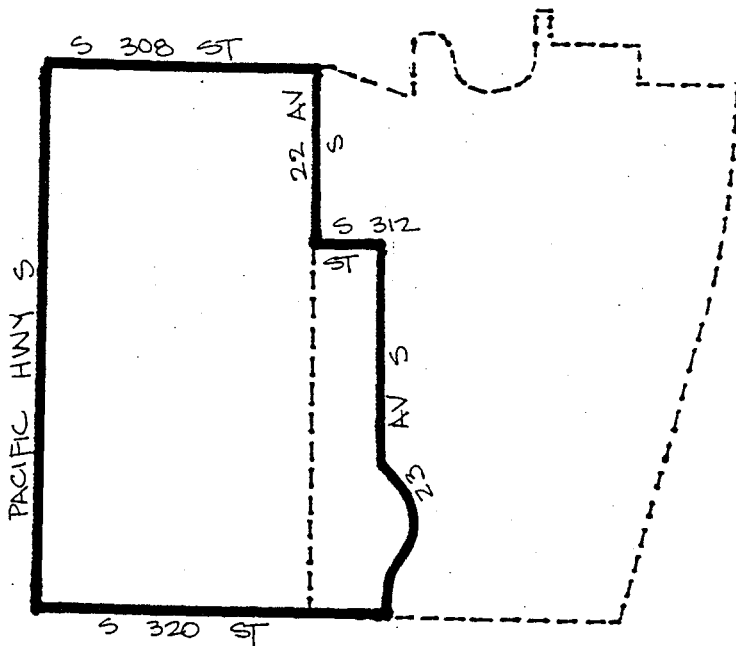
**LEGEND:**

- Legislative Bdy.
- Congressional Bdy.
- Council Bdy.
- Proposed Precinct Bdy.
- Existing Precinct Bdy.

Census TR	Block/BG	Kroll P.	S-T-R
13		232	31-26-4

12221





# 1997 PRECINCT ALTERATION

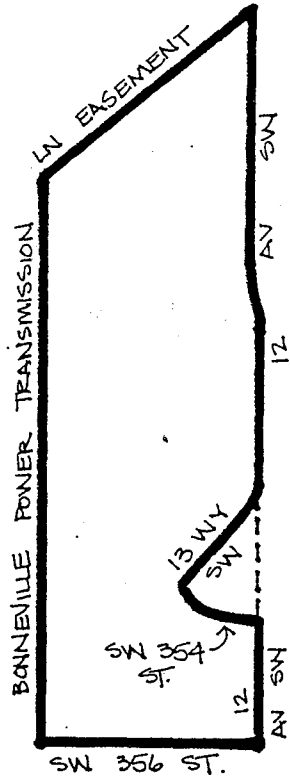
Code	Precinct Name	LG	CG	CC	JU
3054	FED 30-3054	30	9	7	F
3054	FED 30-3054	30	9	7	F
3055	FED 30-3055	30	9	7	F

**LEGEND:**

- Legislative Bdy.
- - - - -** Congressional Bdy.
- .....** Council Bdy.
- Proposed Precinct Bdy.
- - - - -** Existing Precinct Bdy.

Census TR	Block/BG	Kroll P.	S-T-R
300.02		715	9-21-4

12221



# 1997 PRECINCT ALTERATION

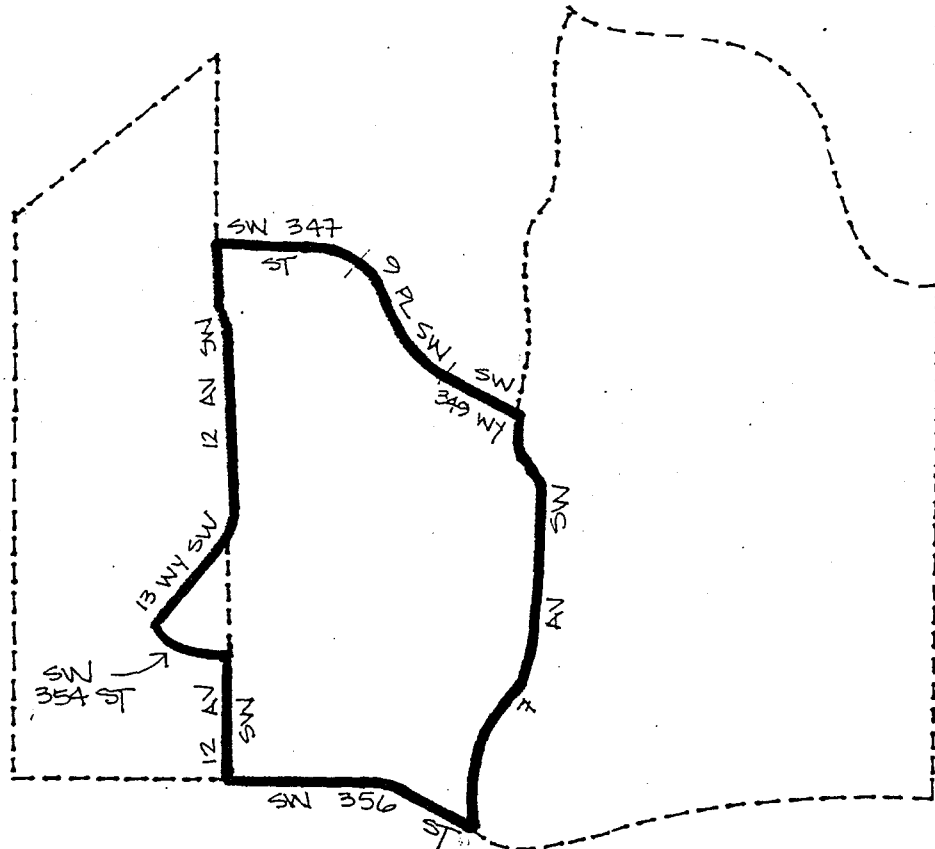
Code	Precinct Name	LG	CG	CC	JU
3234	FED 30-3234	30	9	7	F
3234	FED 30-3234	30	9	7	F

**LEGEND:**

- Legislative Bdy.
- Congressional Bdy.
- Council Bdy.
- Proposed Precinct Bdy.
- Existing Precinct Bdy.

Census TR	Block/BG	Kroll P.	S-T-R
303.02		735	19.21.4

12771



# 1997 PRECINCT ALTERATION

Code	Precinct Name	LG	CG	CC	JU
3372	FED 30-3372	30	9	7	F
3237	FED 30-3237	30	9	7	F
3234	FED 30-3234	30	9	7	F

**LEGEND:**

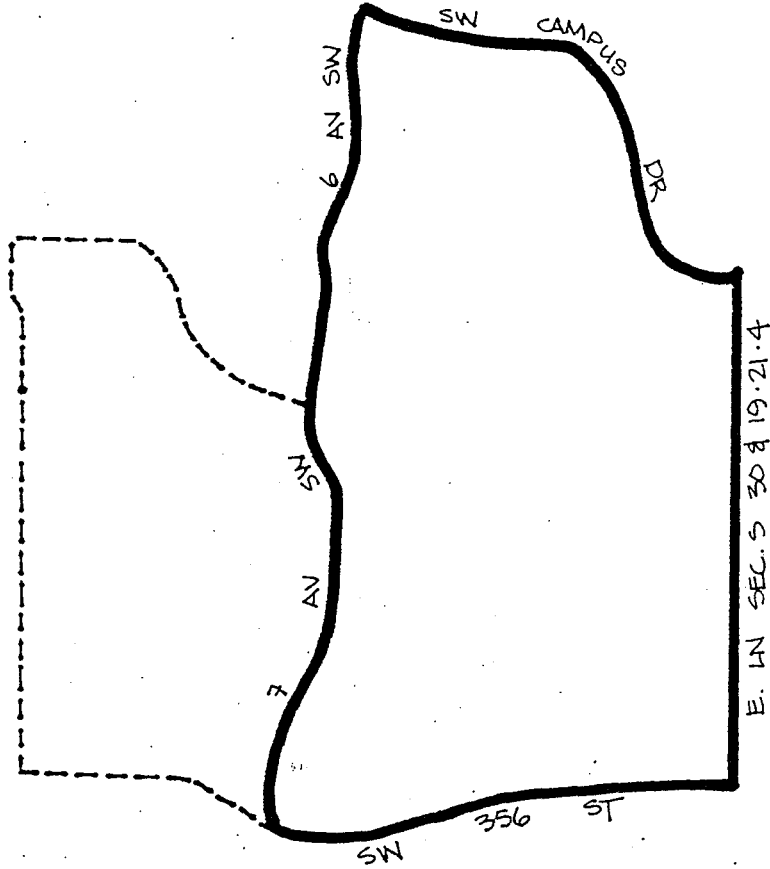
- Legislative Bdy.
- Congressional Bdy.
- .....** Council Bdy.
- Proposed Precinct Bdy.
- Existing Precinct Bdy.

Census TR	Block/BG	Kroll P.	S-T-R
308.02		735	19-21-4

12221

# 1997

## PRECINCT ALTERATION



Code	Precinct Name	LG	CG	CC	JU
3237	FED 30-3237	30	9	7	F
3237	FED 30-3237	30	9	7	F

### LEGEND:

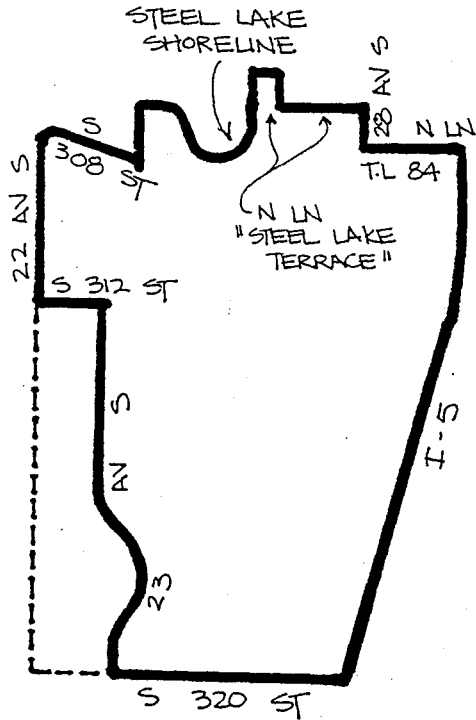
- Legislative Bdy.
- Congressional Bdy.
- .....** Council Bdy.
- Proposed Precinct Bdy.
- Existing Precinct Bdy.

Census TR	Block/BG	Kroll P.	S-T-R
303.02		735	19.21.4

I 222 I

# 1997

## PRECINCT ALTERATION



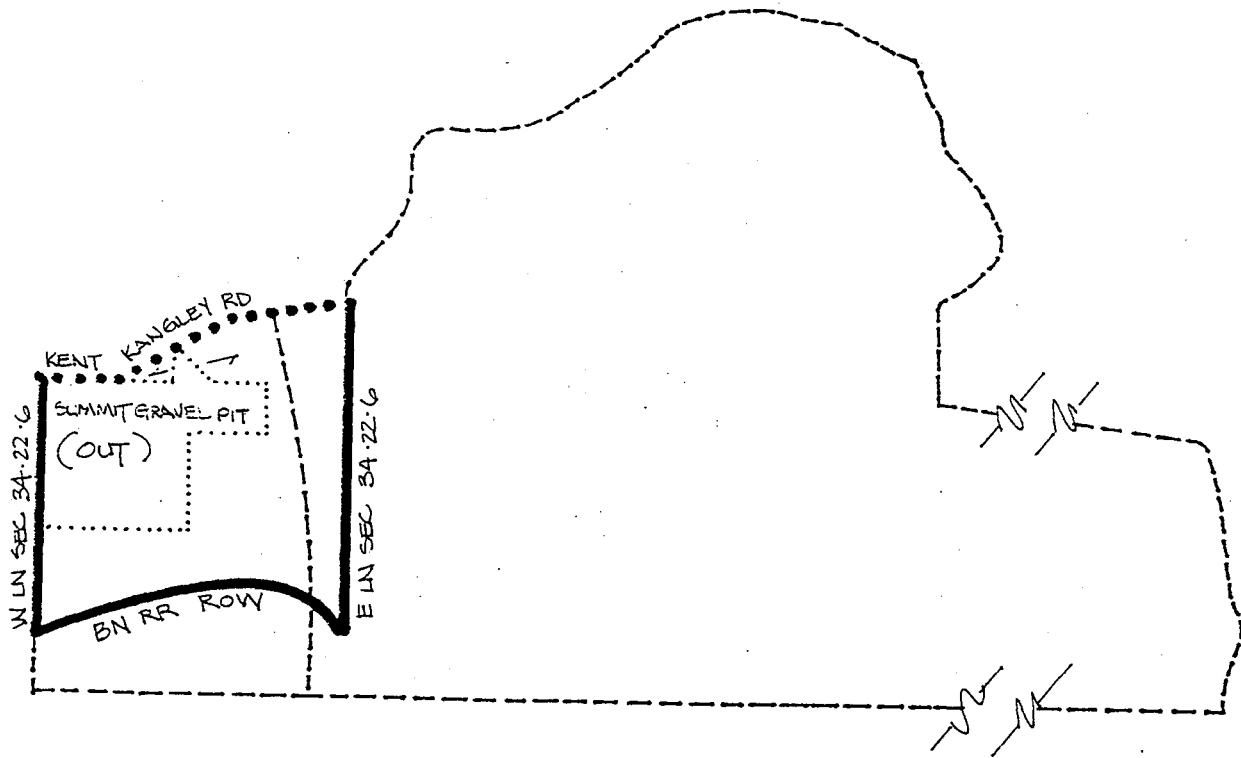
Code	Precinct Name	LG	CG	CC	JU
3055	FED 30-3055	30	9	7	F
3055	FED 30-3055	30	9	7	F

### LEGEND:

- Legislative Bdy.
- Congressional Bdy.
- Council Bdy.
- Proposed Precinct Bdy.
- Existing Precinct Bdy.

Census TR	Block/BG	Kroll P..	S-T-R
300.02		715	9-21-4

I 2221



# 1997 PRECINCT ALTERATION

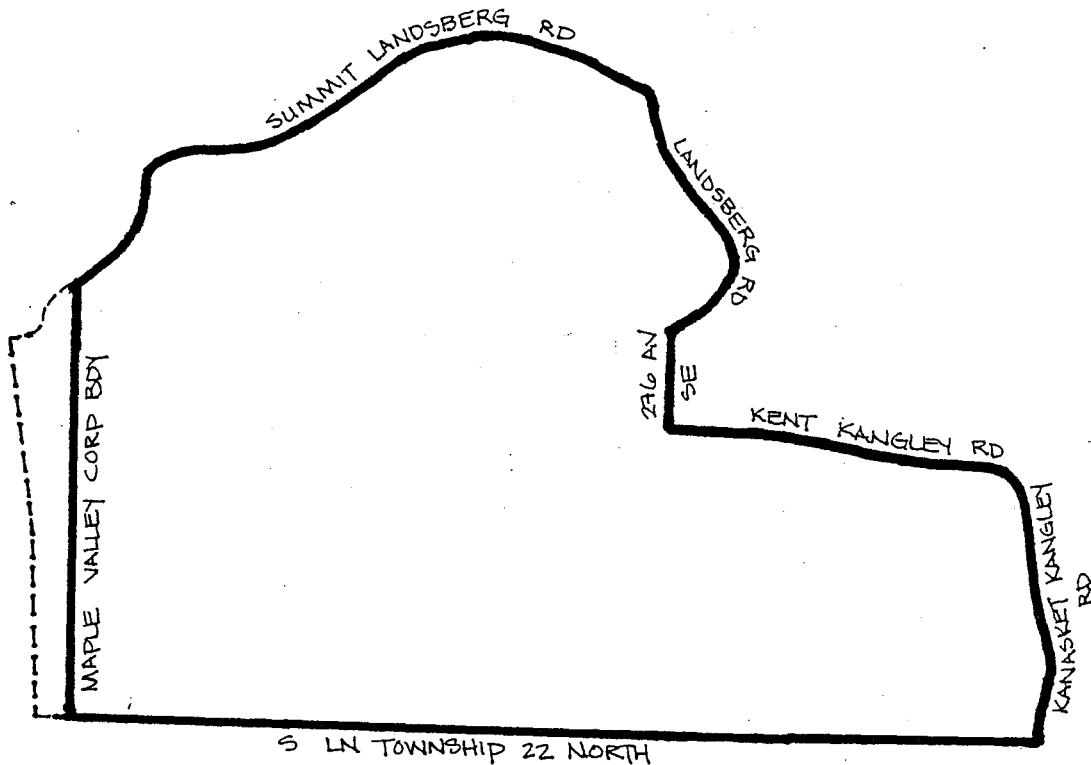
Code	Precinct Name	LG	CG	CC	JU
2614	M-V 05-2614	5	8	9	AU
2614	SUMMIT	5	8	9	AU
0932	RAVENSDALE	5	8	9	AU

**LEGEND:**

- Legislative Bdy.
- Congressional Bdy.
- Council Bdy.
- Proposed Precinct Bdy.
- Existing Precinct Bdy.

Census TR	Block/BG	Kroll P..	S-T-R
316		B25	34-22-6

12221



# 1997 PRECINCT ALTERATION

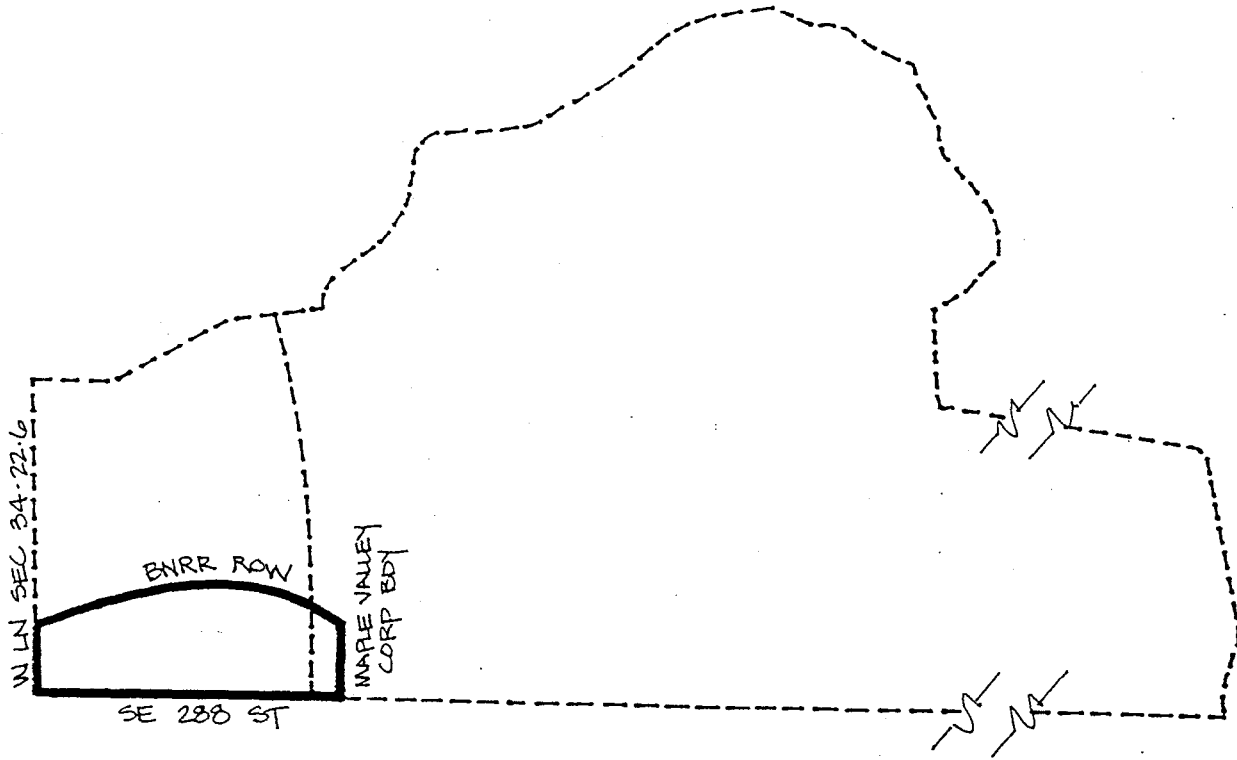
Code	Precinct Name	LG	CG	CC	JU
0932	RAVENSDALE	5	8	9	AU
0932	RAVENSDALE	5	8	9	AU

**LEGEND:**

- Legislative Bdy.
- Congressional Bdy.
- Council Bdy.
- Proposed Precinct Bdy.
- Existing Precinct Bdy.

Census TR	Block/BG	Kroll P..	S-T-R
316		B25	35.22.6

12221



# 1997 PRECINCT ALTERATION

Code	Precinct Name	LG	CG	CC	JU
3367	M-V 05-3367	5	8	9	AU
2614	SUMMIT	5	8	9	AU
0932	RAVENSDALE	5	8	9	AU

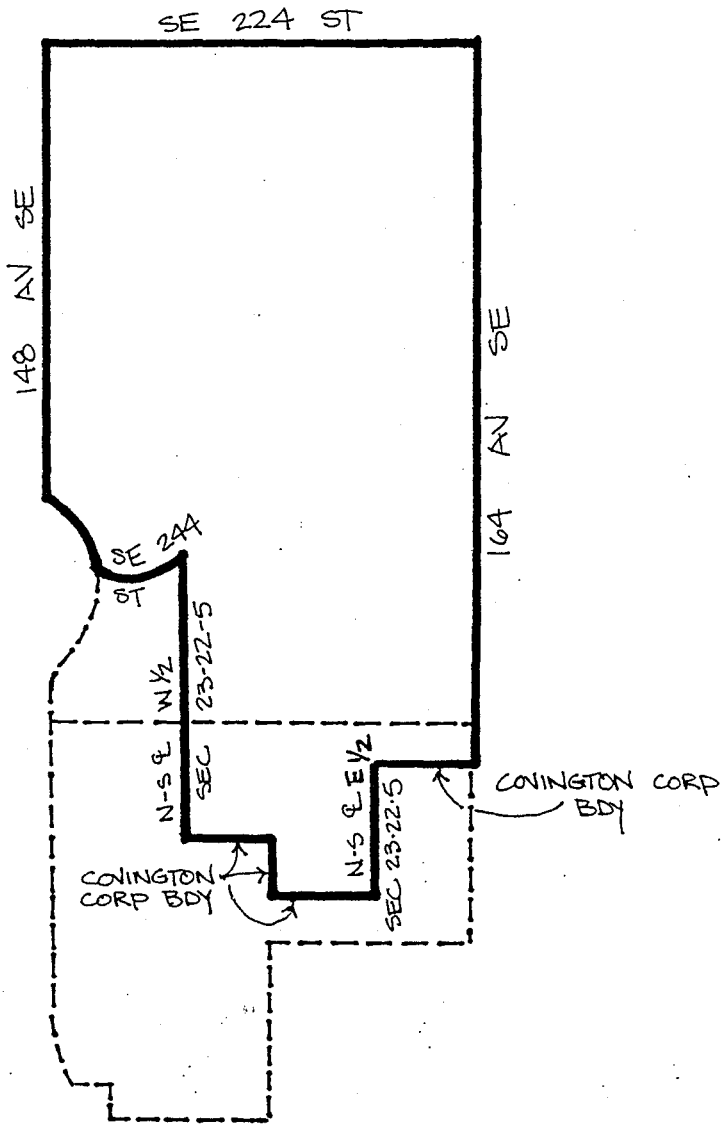
**LEGEND:**

- Legislative Bdy.
- Congressional Bdy.
- Council Bdy.
- Proposed Precinct Bdy.
- Existing Precinct Bdy.

Census TR	Block/BG	Kroll P.	S-T-R
36		B25	34-22-6

12721





# 1997 PRECINCT ALTERATION

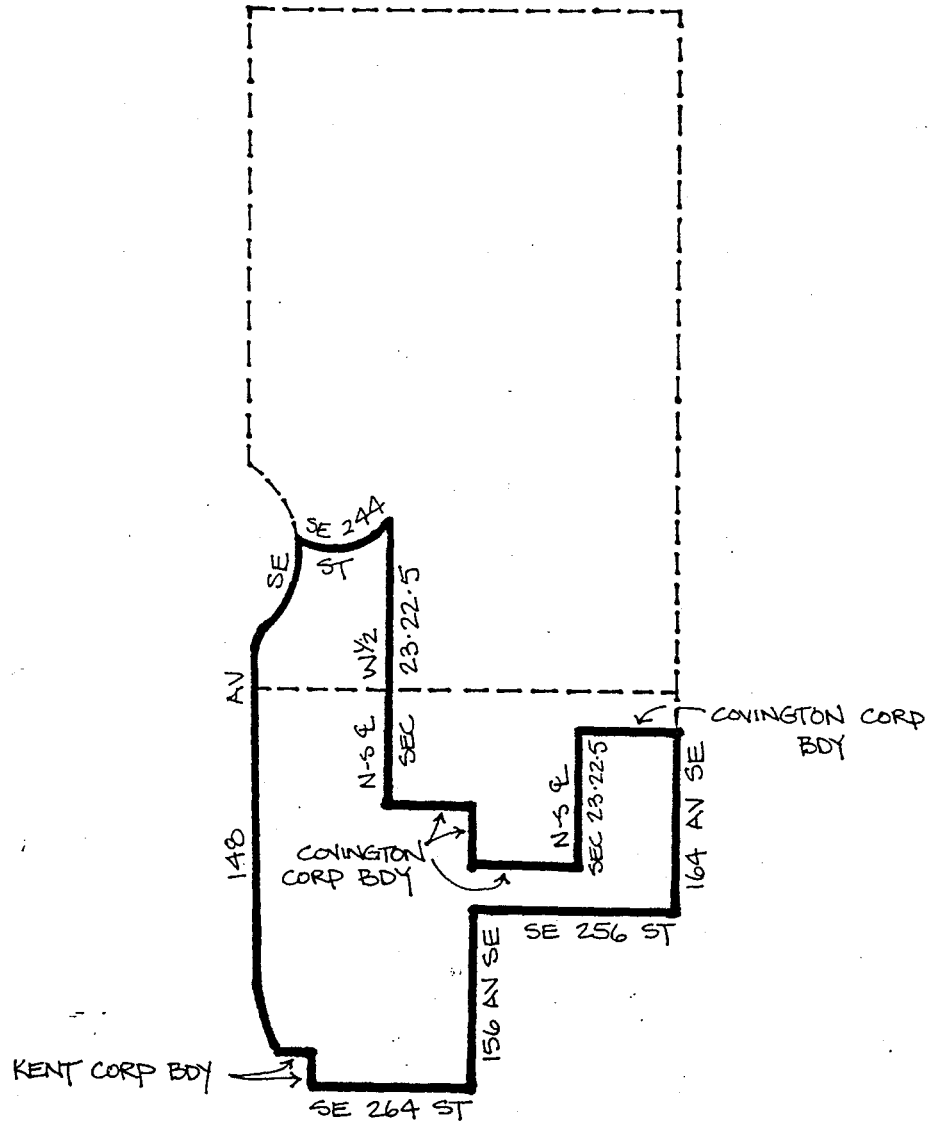
Code	Precinct Name	LG	CG	CC	JU
0493	HAM LAKE	47	8	9	AU
0493	HAM LAKE	47	8	9	AU
1145	TERRACE PARK	47	8	9	AU

**LEGEND:**

- Legislative Bdy.
- Congressional Bdy.
- Council Bdy.
- Proposed Precinct Bdy.
- Existing Precinct Bdy.

Census TR	Block/BG	Kroll P.	S-T-R
317.01		650	23-22-5

12721



# 1997 PRECINCT ALTERATION

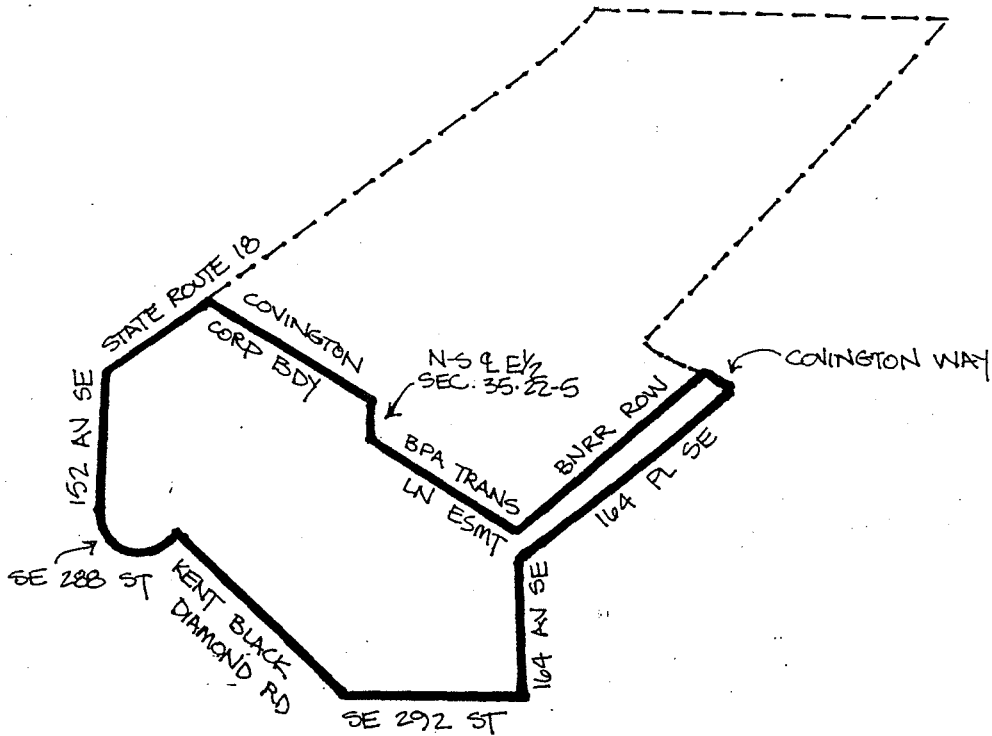
Code	Precinct Name	LG	CG	CC	JU
1145	CON 47-1145	47	8	9	AU
1145	TERRACE PARK	47	8	9	AU
0493	HAM LAKE	47	8	9	AU

**LEGEND:**

- Legislative Bdy.
- Congressional Bdy.
- .....** Council Bdy.
- Proposed Precinct Bdy.
- Existing Precinct Bdy.

Census TR	Block/BG	Kroll P.	S-T-R
317.01		650	23-22-5

12721



# 1997 PRECINCT ALTERATION

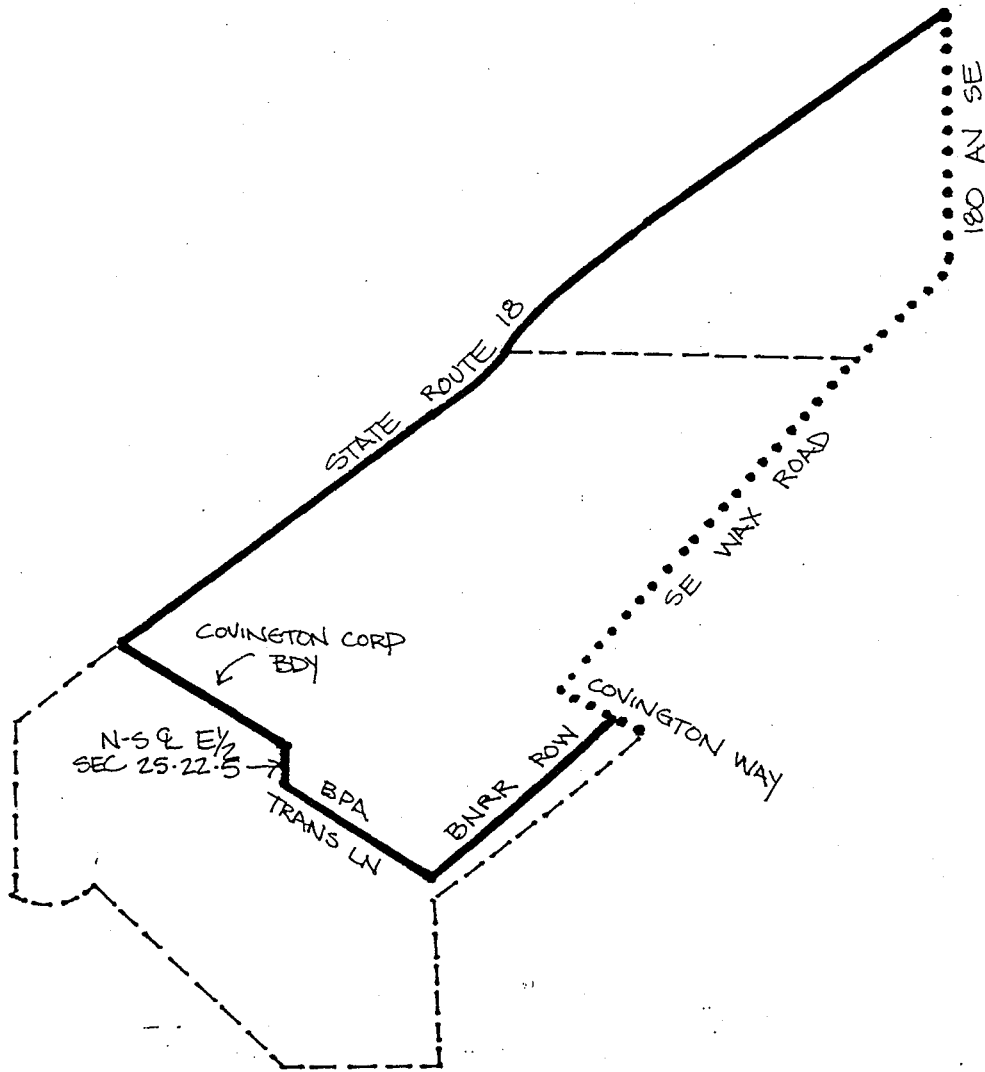
Code	Precinct Name	LG	CG	CC	JU
0343	JENKINS CREEK	47	8	9	AU
0343	COVINGTON	47	8	9	AU

**LEGEND:**

- Legislative Bdy.
- Congressional Bdy.
- Council Bdy.
- Proposed Precinct Bdy.
- Existing Precinct Bdy.

Census TR	Block/BG	Kroll P.	S-T-R
317.01		662	35-22-5

12721



# 1997 PRECINCT ALTERATION

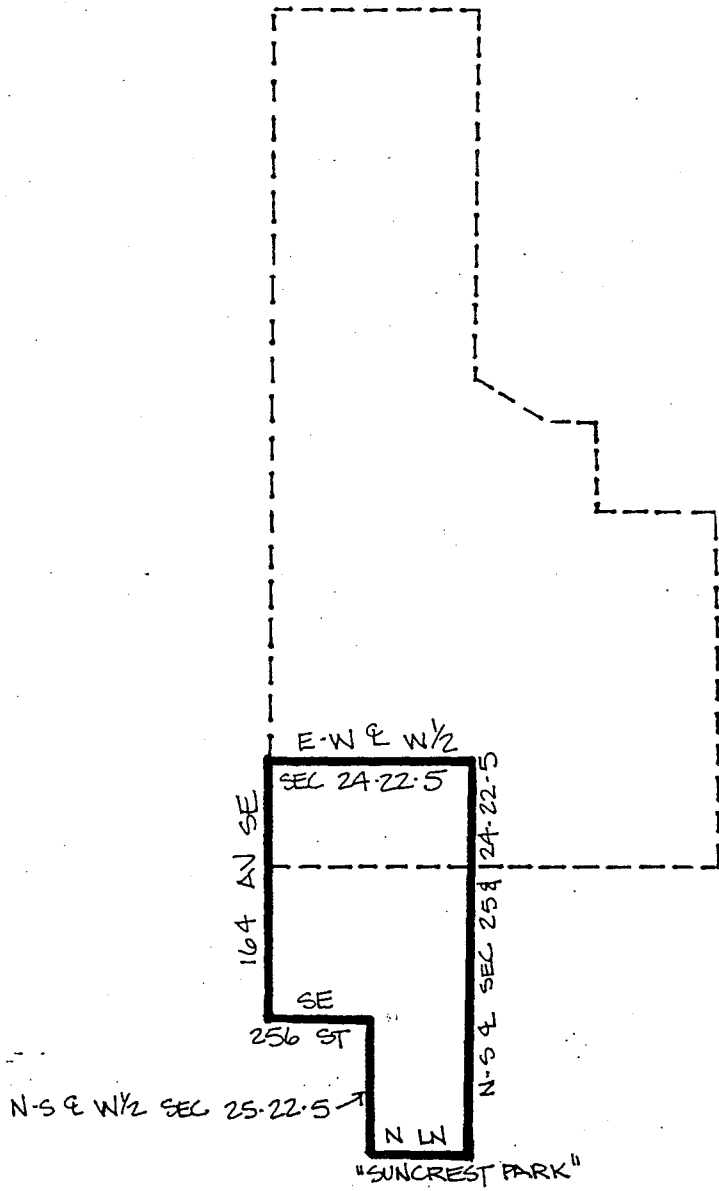
Code	Precinct Name	LG	CG	CC	JU
0279	COV 47-0279	47	8	9	AU
0279	BURNWOOD	47	8	9	AU
0343	COVINGTON	47	8	9	AU

**LEGEND:**

- Legislative Bdy.
- Congressional Bdy.
- Council Bdy.
- Proposed Precinct Bdy.
- Existing Precinct Bdy.

Census TR	Block/BG	Kroll P..	S-T-R
317.02		657	25-22-5

12221



# 1997 PRECINCT ALTERATION

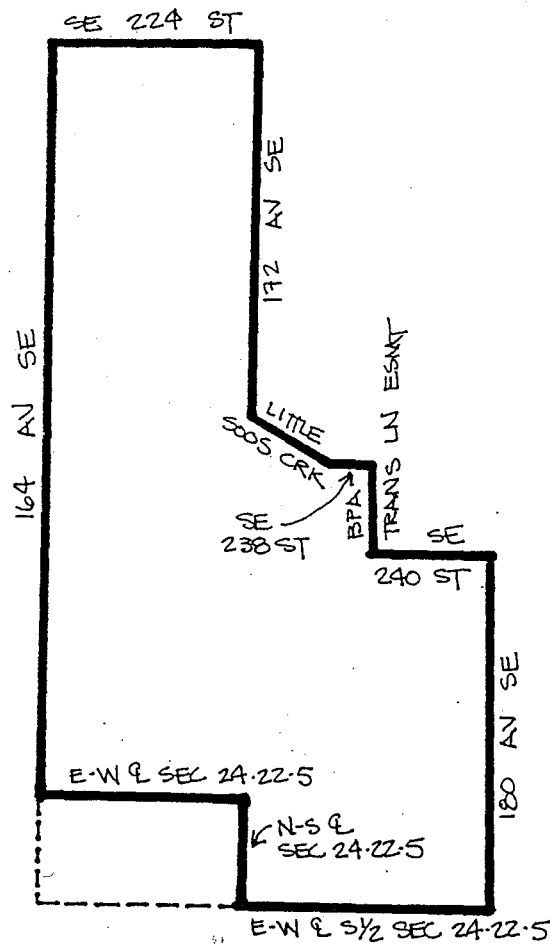
Code	Precinct Name	LG	CG	CC	JU
2843	CON 47-2843	47	8	9	AU
2843	LEIGH	47	8	9	AU
0688	LITTLE SCOS	47	8	9	AU

**LEGEND:**

- Legislative Bdy.
- Congressional Bdy.
- Council Bdy.
- Proposed Precinct Bdy.
- Existing Precinct Bdy.

Census TR	Block/BG	Kroll P..	S-T-R
317.02		651	24-22-5

12721



# 1997 PRECINCT ALTERATION

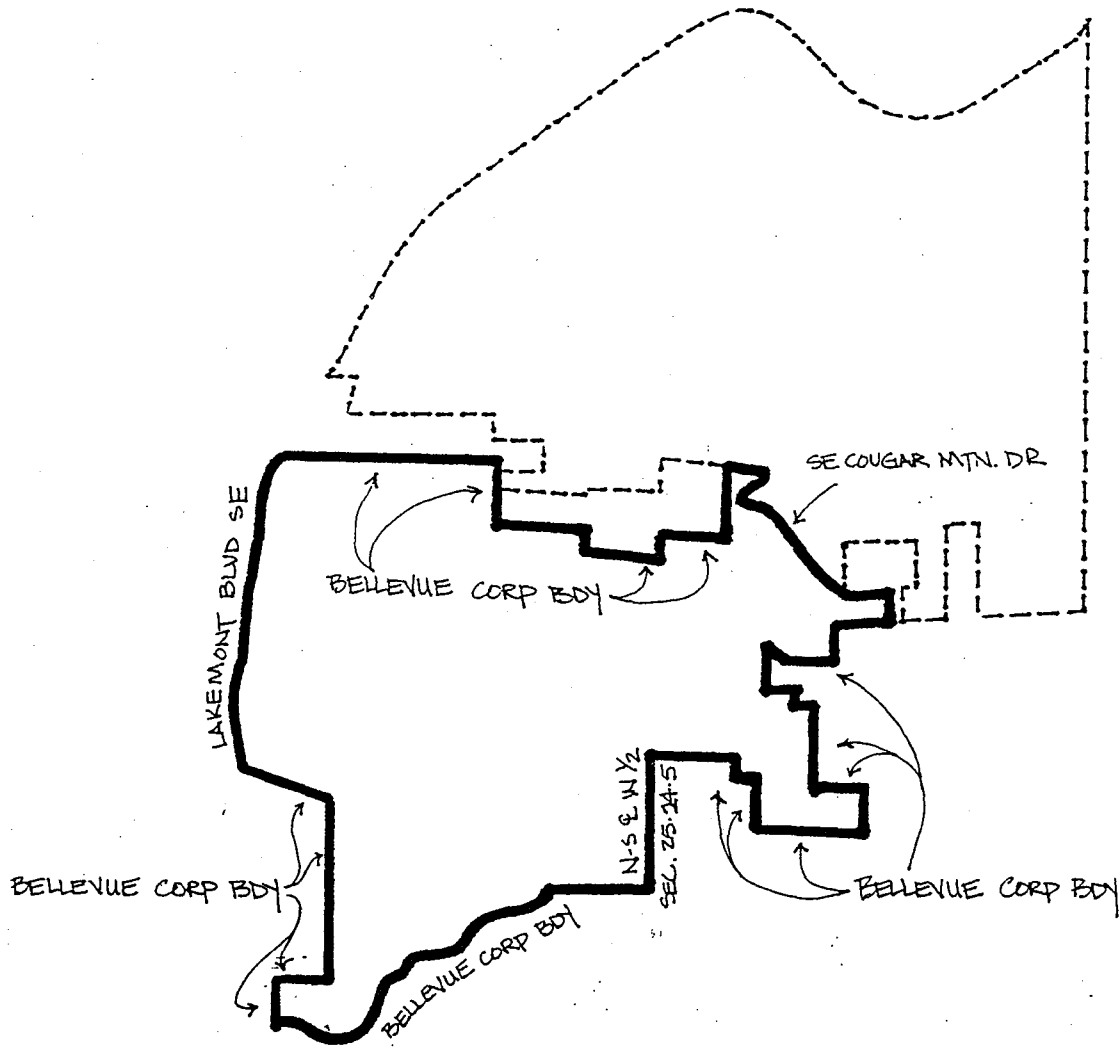
Code	Precinct Name	LG	CG	CC	JU
0688	LITTLE 5005	47	8	9	AU
0688	LITTLE 5005	47	8	9	AU

**LEGEND:**

- Legislative Bdy.
- Congressional Bdy.
- Council Bdy.
- Proposed Precinct Bdy.
- Existing Precinct Bdy.

Census TR	Block/BG	Kroll P.	S-T-R
317-02		651	24-22-5

12221



# 1997 PRECINCT ALTERATION

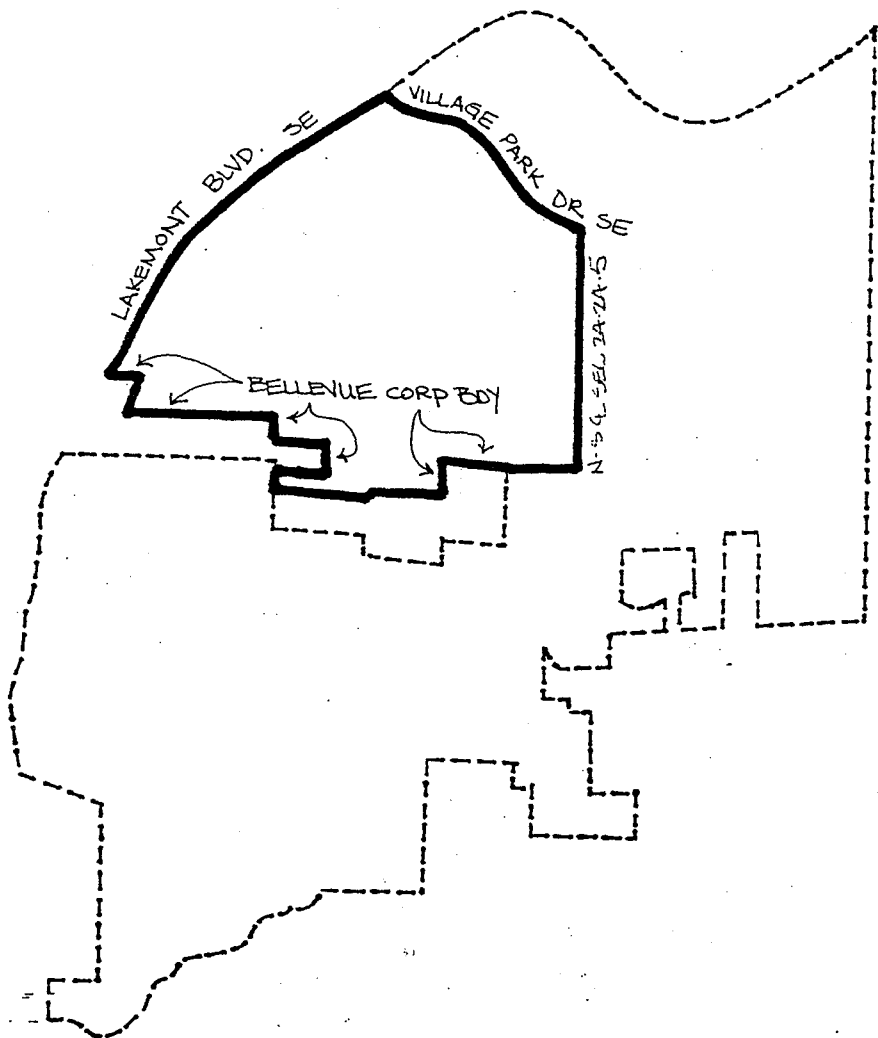
Code	Precinct Name	LG	CG	CC	JU
3370	BEL 41-3370	41	8	12	B
3084	BEL 41-3084	41	8	12	B

**LEGEND:**

- Legislative Bdy.
- Congressional Bdy.
- Council Bdy.
- Proposed Precinct Bdy.
- Existing Precinct Bdy.

Census TR	Block/BG	Kroll P..	S-T-R
250.02		462	25-24-5

12221



# 1997 PRECINCT ALTERATION

Code	Precinct Name	LG	CG	CC	JU
3371	BEL 41-3371	A	8	12	B
3084	BEL 41-3084	A	8	12	B

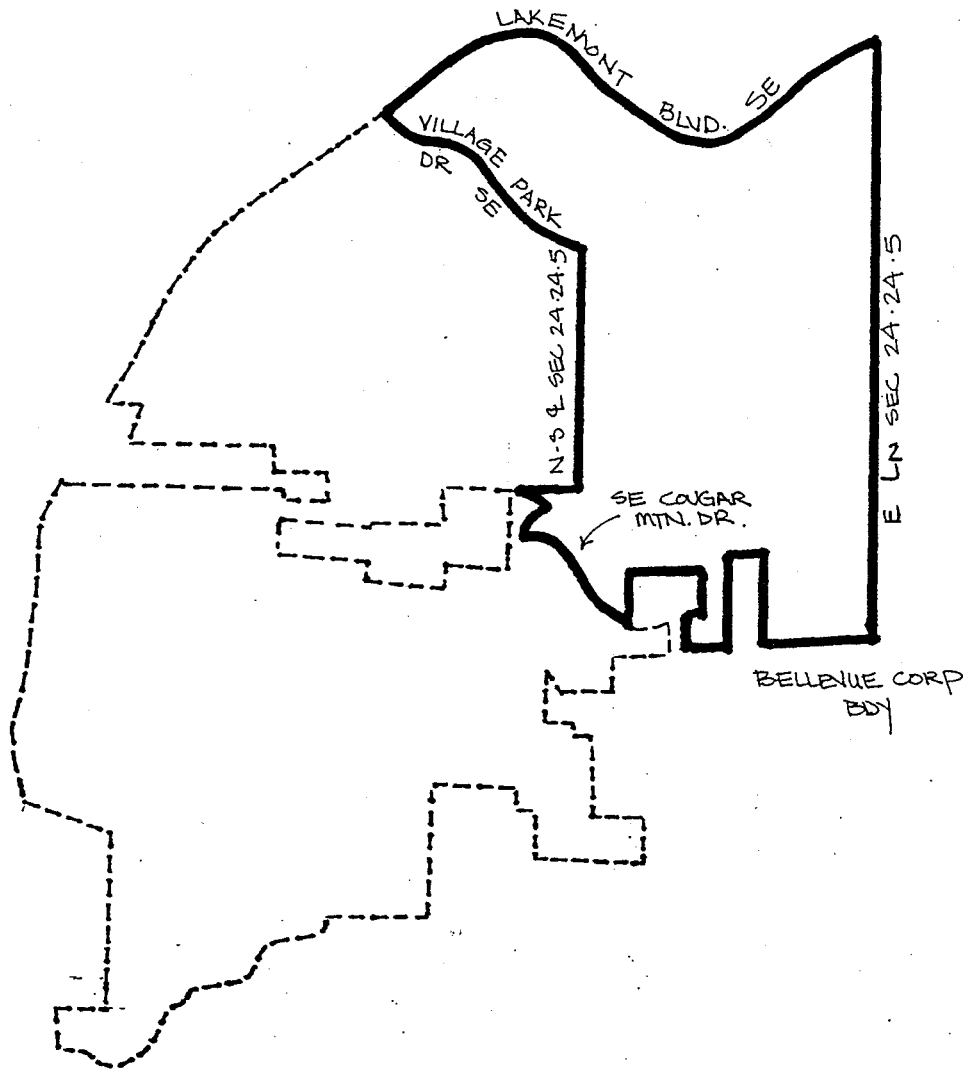
**LEGEND:**

- Legislative Bdy.
- Congressional Bdy.
- Council Bdy.
- Proposed Precinct Bdy.
- Existing Precinct Bdy.

Census TR	Block/BG	Kroll P..	S-T-R
250-02		568	24-24.5

12721





# 1997 PRECINCT ALTERATION

Code	Precinct Name	LG	CG	CC	JU
3084	BEL 41-3084	41	8	12	B
3084	BEL 41-3084	41	8	12	B

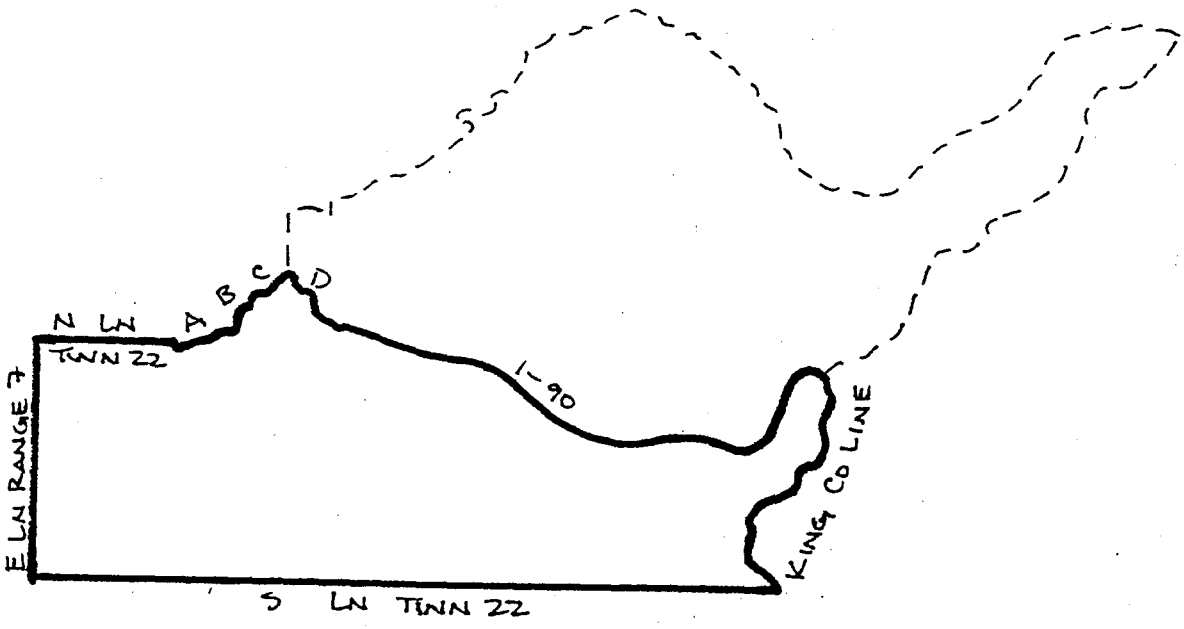
**LEGEND:**

- Legislative Bdy.
- Congressional Bdy.
- Council Bdy.
- Proposed Precinct Bdy.
- Existing Precinct Bdy.

Census TR	Block/BG	Kroll P.	S-T-R
250.02		568	24.24.5

12221

- A CMSTP&P RR
- B BOXLEY CREEK
- C EDGENICK RD
- D S FORK SNOQUALMIE RIVER



# 1997 PRECINCT ALTERATION

Code	Precinct Name	LG	CG	CC	JU
3374	TWIN FALLS	5	8	12	1
2616	SNO PASS	5	8	12	1

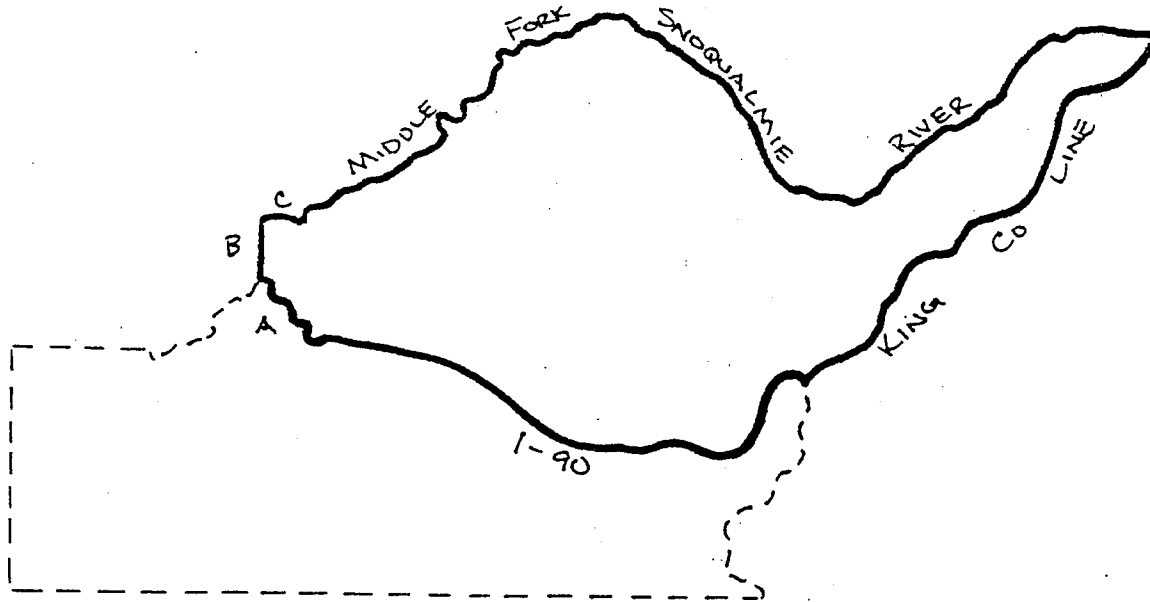
**LEGEND:**

- Legislative Bdy.
- Congressional Bdy.
- Council Bdy.
- Proposed Precinct Bdy.
- Existing Precinct Bdy.

Census TR	Block/BG	Kroll P.	S-T-R

12221






A S FORK SNOQUALMIE RIVER  
 B 468 AN SE  
 C LAKE DOROTHY RD



# 1997 PRECINCT ALTERATION

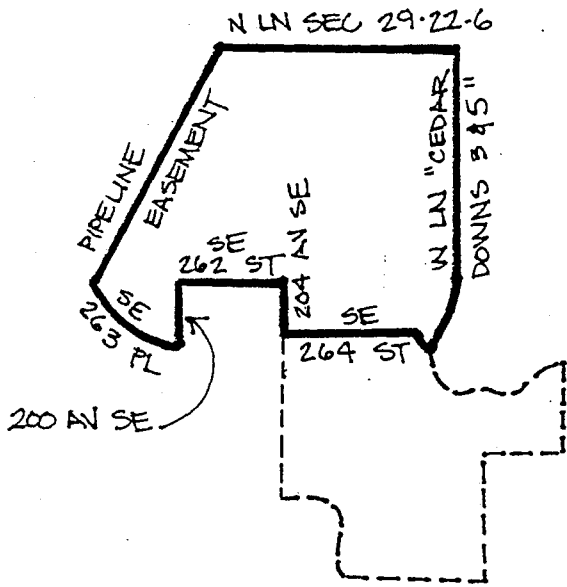
Code	Precinct Name	LG	CG	CC	JU
2616	SNO PASS	5	8	12	1
2616	SNO PASS	5	8	12	1

**LEGEND:**

-  Legislative Bdy.
-  Congressional Bdy.
-  Council Bdy.
-  Proposed Precinct Bdy.
-  Existing Precinct Bdy.

Census TR	Block/BG	Kroll P..	S-T-R

12721



# 1997 PRECINCT ALTERATION

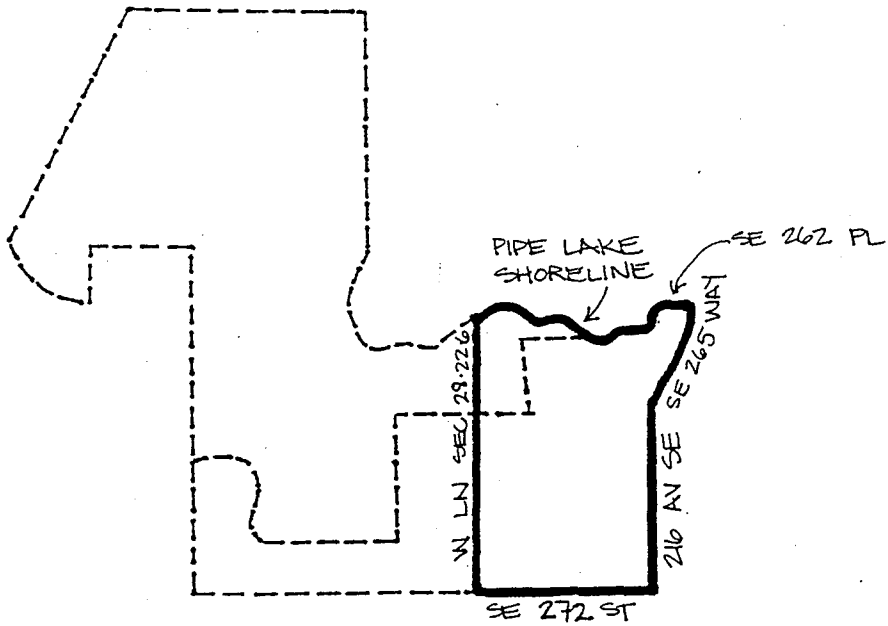
Code	Precinct Name	LG	CG	CC	JU
0313	COV 47-0313	47	8	12	AU
0313	CHEROKEE	47	8	12	AU

**LEGEND:**

- Legislative Bdy.
- Congressional Bdy.
- Council Bdy.
- Proposed Precinct Bdy.
- Existing Precinct Bdy.

Census TR	Block/BG	Kroll P.	S-T-R
320.04		659	29-22-6

12221



# 1997 PRECINCT ALTERATION

Code	Precinct Name	LG	CD	CC	JU
3322	M-V 47-3322	47	8	12	AU
3322	SASKATOON	47	8	12	AU
0313	CHEROKEE	47	8	12	AU

**LEGEND:**

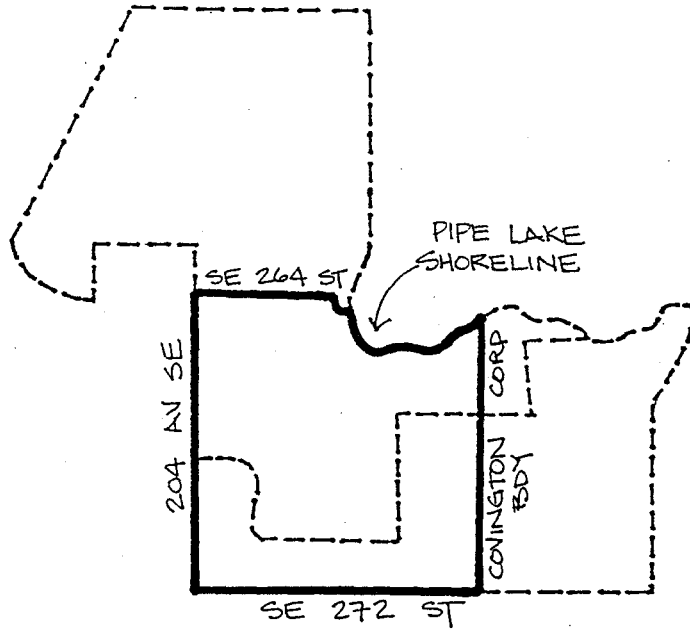
- Legislative Bdy.
- Congressional Bdy.
- Council Bdy.
- Proposed Precinct Bdy.
- Existing Precinct Bdy.

Census TR	Block/BG	Kroll P..	S-T-R
320-04		B25A	28-22-6

12221

# 1997

## PRECINCT ALTERATION



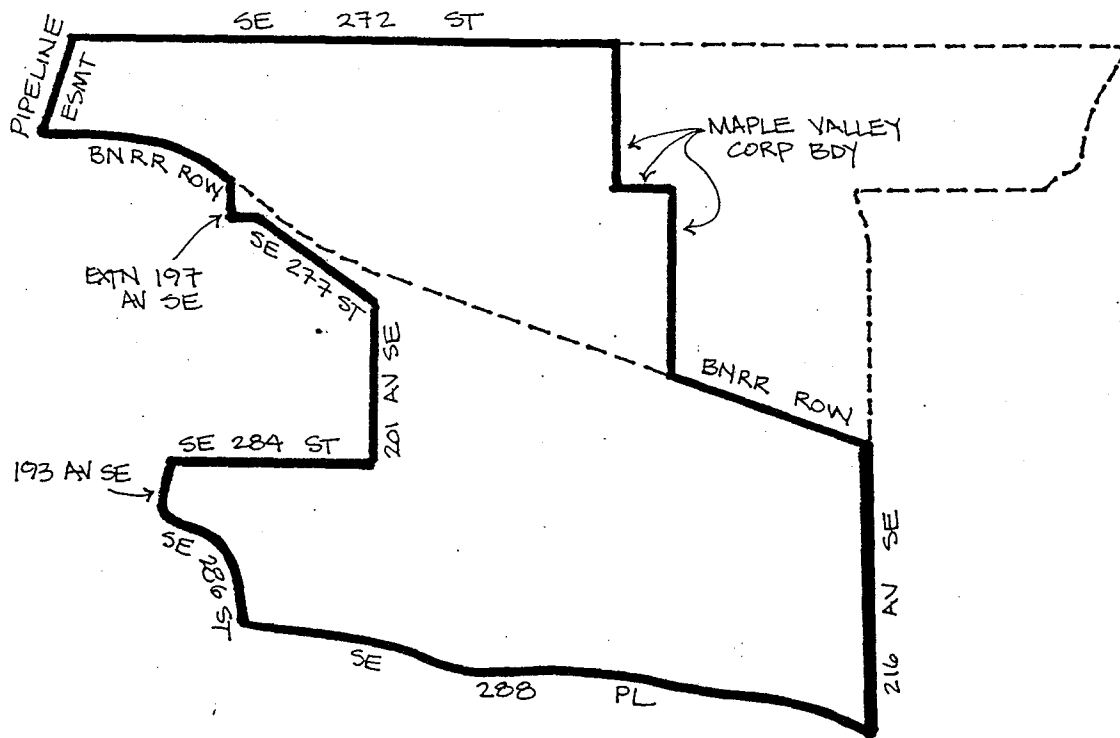
Code	Precinct Name	LG	CG	CC	JU
3365	CON 47-3365	47	8	12	AU
0313	CHEROKEE	47	8	12	AU
3322	SASKATOON	47	8	12	AU

### LEGEND:

- Legislative Bdy.
- Congressional Bdy.
- .....** Council Bdy.
- Proposed Precinct Bdy.
- Existing Precinct Bdy.

Census TR	Block/BG	Kroll P.	S-T-R
320.04		659	29-22-6

12221



# 1997 PRECINCT ALTERATION

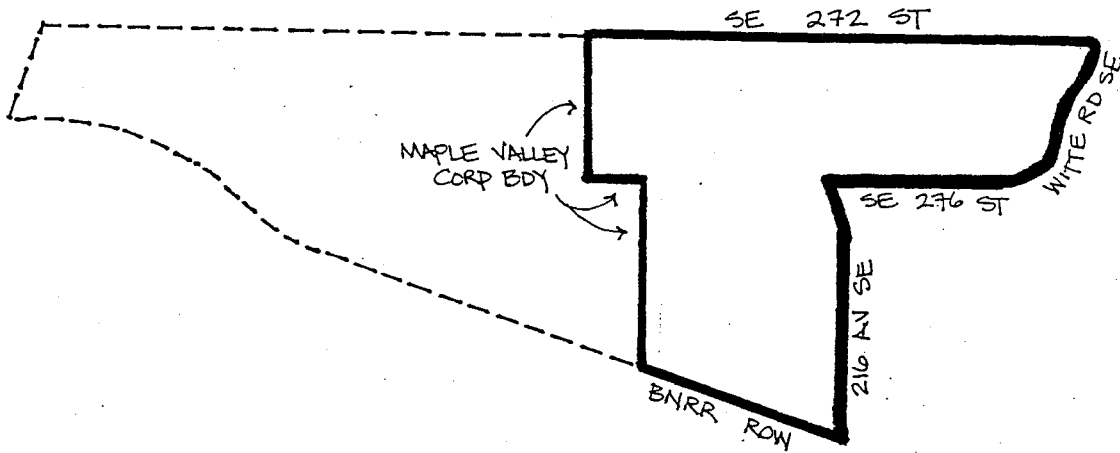
Code	Precinct Name	LG	CG	CC	JU
3268	PLAINS	47	8	12	AU
3268	PLAINS	47	8	12	AU
0528	HOMESTEAD	47	8	12	AU

**LEGEND:**

- Legislative Bdy.
- Congressional Bdy.
- .....** Council Bdy.
- Proposed Precinct Bdy.
- Existing Precinct Bdy.

Census TR	Block/BG	Kroll P.	S-T-R
320.06		605	32-22-6

12221



# 1997 PRECINCT ALTERATION

Code	Precinct Name	LG	CG	CC	JU
0528	M-V 47-0528	47	6	12	AV
0528	HOMESTEAD	47	6	12	AV

**LEGEND:**

- Legislative Bdy.
- Congressional Bdy.
- Council Bdy.
- Proposed Precinct Bdy.
- Existing Precinct Bdy.

Census TR	Block/BG	Kroll P.	S-T-R
320.06		B25	33-22-6

12221








# 1997

## PRECINCT ALTERATION

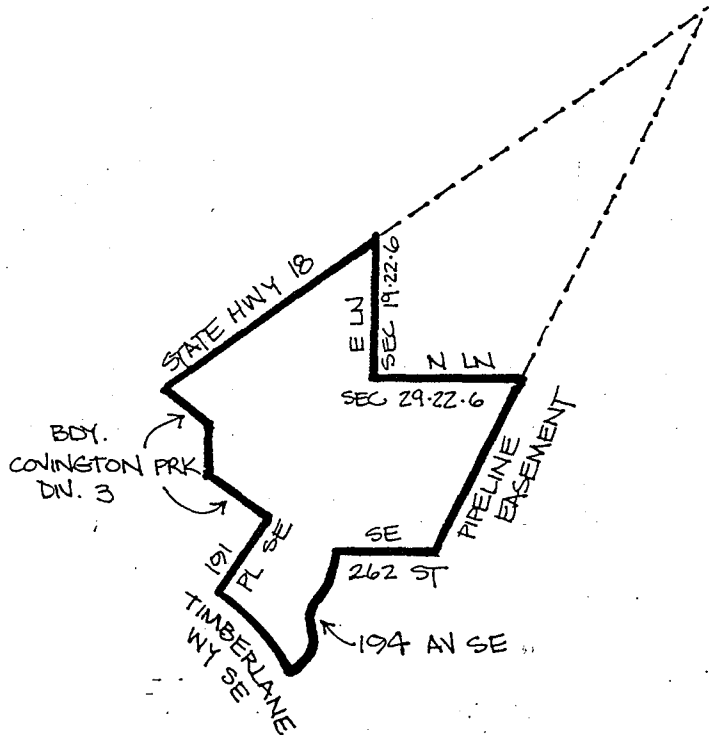
Code	Precinct Name	LG	CG	CC	JU
3244	CON 47-3244	47	8	12	AU
3244	BLACK RNER	47	8	12	AU

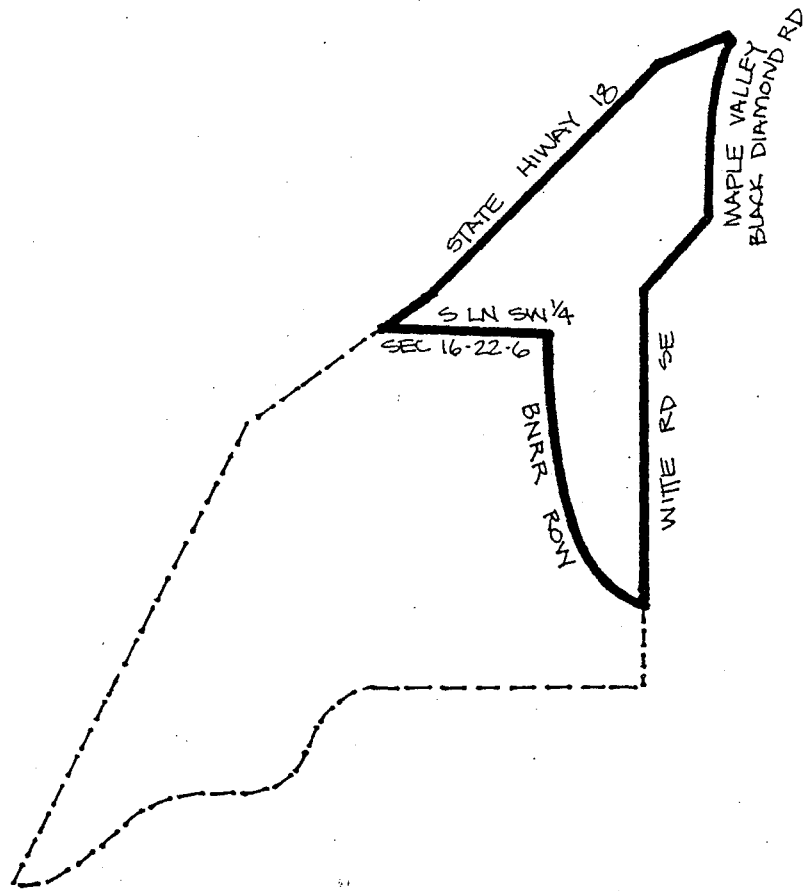
### LEGEND:

-  Legislative Bdy.
-  Congressional Bdy.
-  Council Bdy.
-  Proposed Precinct Bdy.
-  Existing Precinct Bdy.

Census TR	Block/BG	Kroll P.	S-T-R
320.05		658	30-22-6

12221





# 1997 PRECINCT ALTERATION

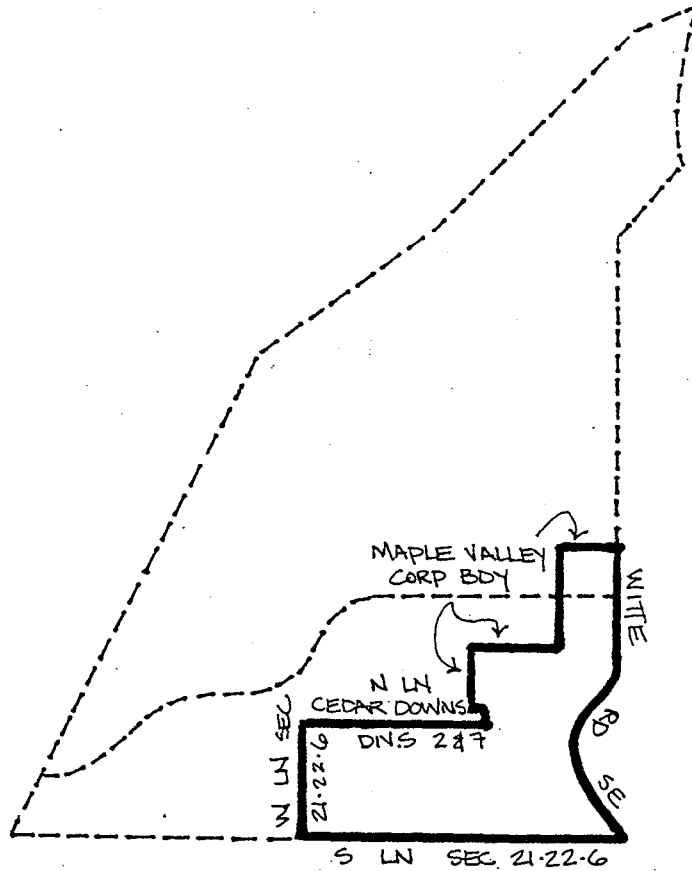
Code	Precinct Name	LG	CG	CC	JU
3366	M-V 47-3366	47	8	12	AU
3295	LUND	47	8	12	AU

**LEGEND:**

- Legislative Bdy.
- Congressional Bdy.
- .....** Council Bdy.
- Proposed Precinct Bdy.
- Existing Precinct Bdy.

Census TR	Block/BG	Kroll P..	S-T-R
320.04		B-25	16-22-6

12221



# 1997 PRECINCT ALTERATION

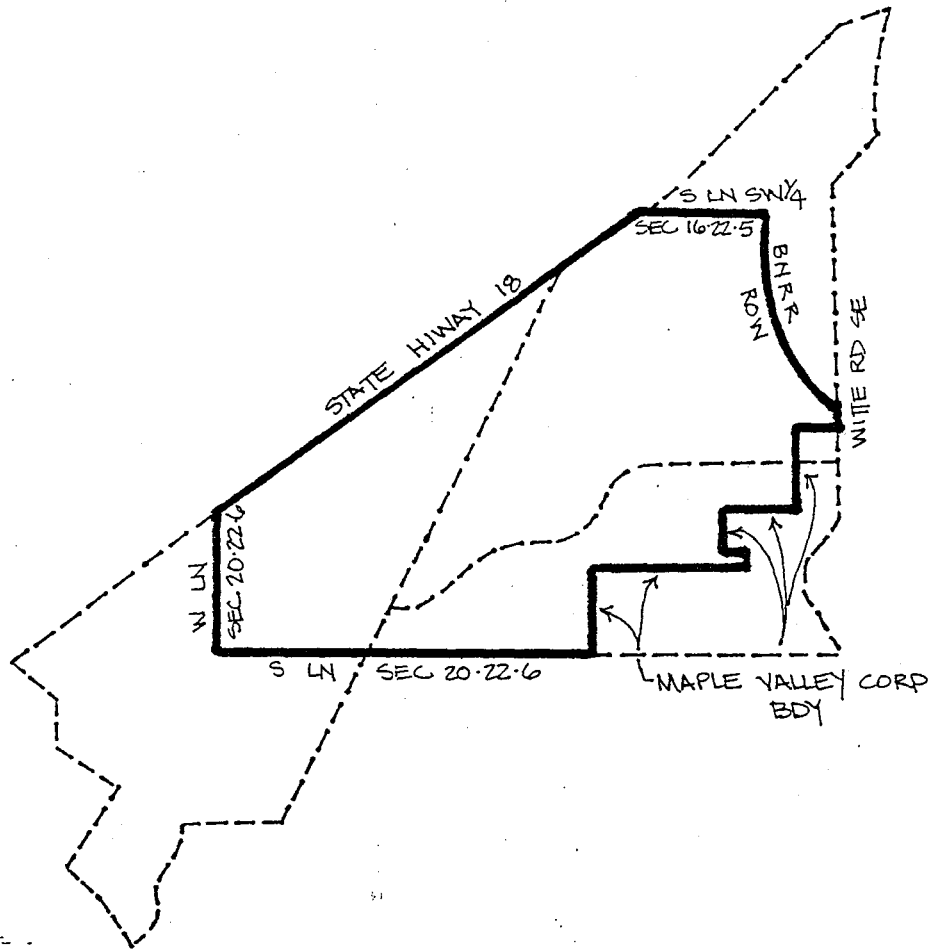
Code	Precinct Name	LG	CG	CC	JU
2841	M-V 47-2841	47	8	12	AW
2841	HEATH	47	8	12	AW
3295	LUND	47	8	12	AW

**LEGEND:**

- Legislative Bdy.
- Congressional Bdy.
- Council Bdy.
- Proposed Precinct Bdy.
- Existing Precinct Bdy.

Census TR	Block/BG	Kroll P..	S-T-R
320.04		B25	2-22-6

12221



# 1997 PRECINCT ALTERATION

Code	Precinct Name	LG	CG	CC	JU
3295	LUND	47	8	12	AU
3295	LUND	47	8	12	AU
2841	HEATH	47	8	12	AU
3244	BLACK RIVER	47	8	12	AU

**LEGEND:**

- Legislative Bdy.
- Congressional Bdy.
- Council Bdy.
- Proposed Precinct Bdy.
- Existing Precinct Bdy.

Census TR	Block/BG	Kroll P.	S-T-R
320.04		B 25	20-22-6






12721

# 1997

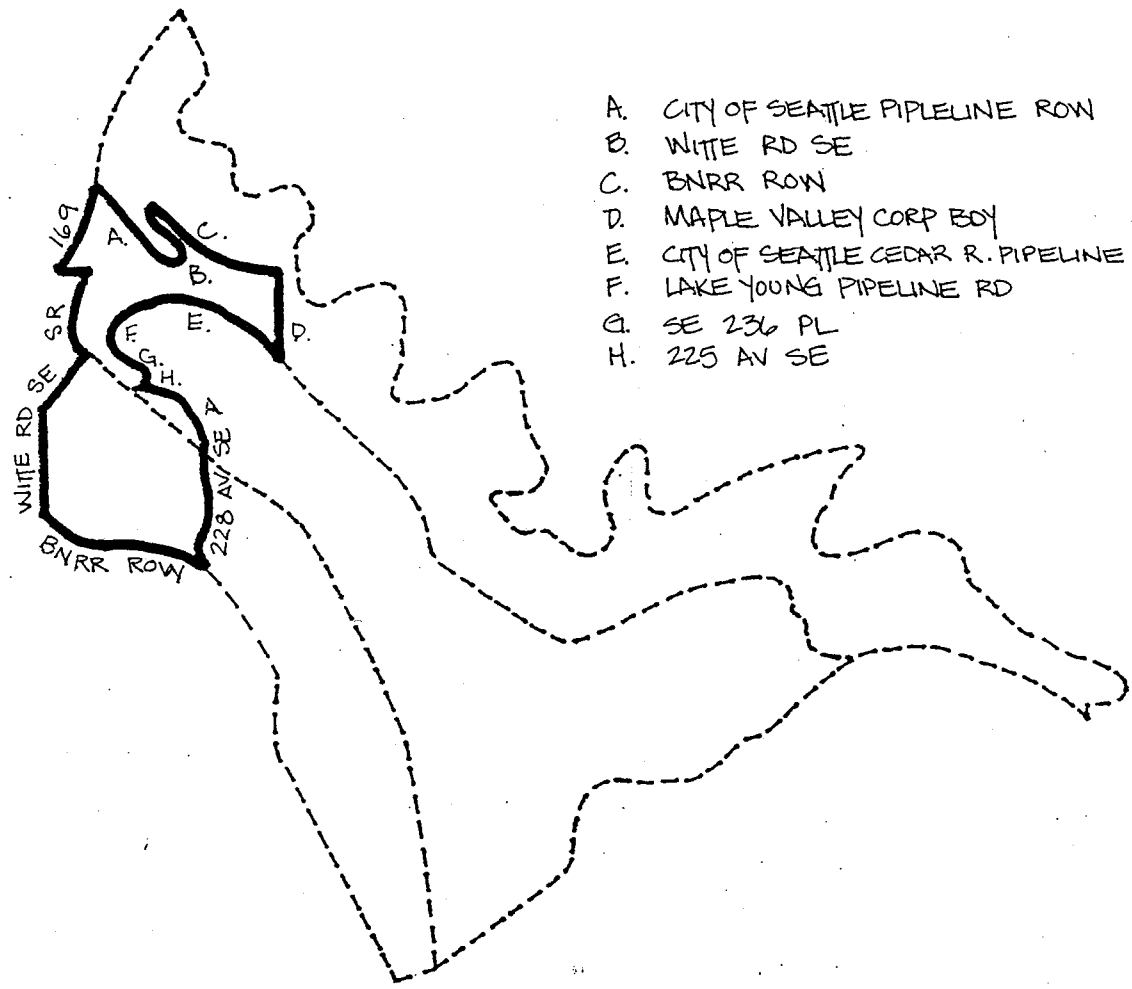
## PRECINCT ALTERATION

Code	Precinct Name	LG	CG	CC	JU
3369	M-V 05-3369	5	8	12	AU
2400	FIRLAND *	5	8	12	AU
3245	ROCK CREEK	5	8	12	AU
3294	BITTERROOT	5	8	12	AU

**LEGEND:**

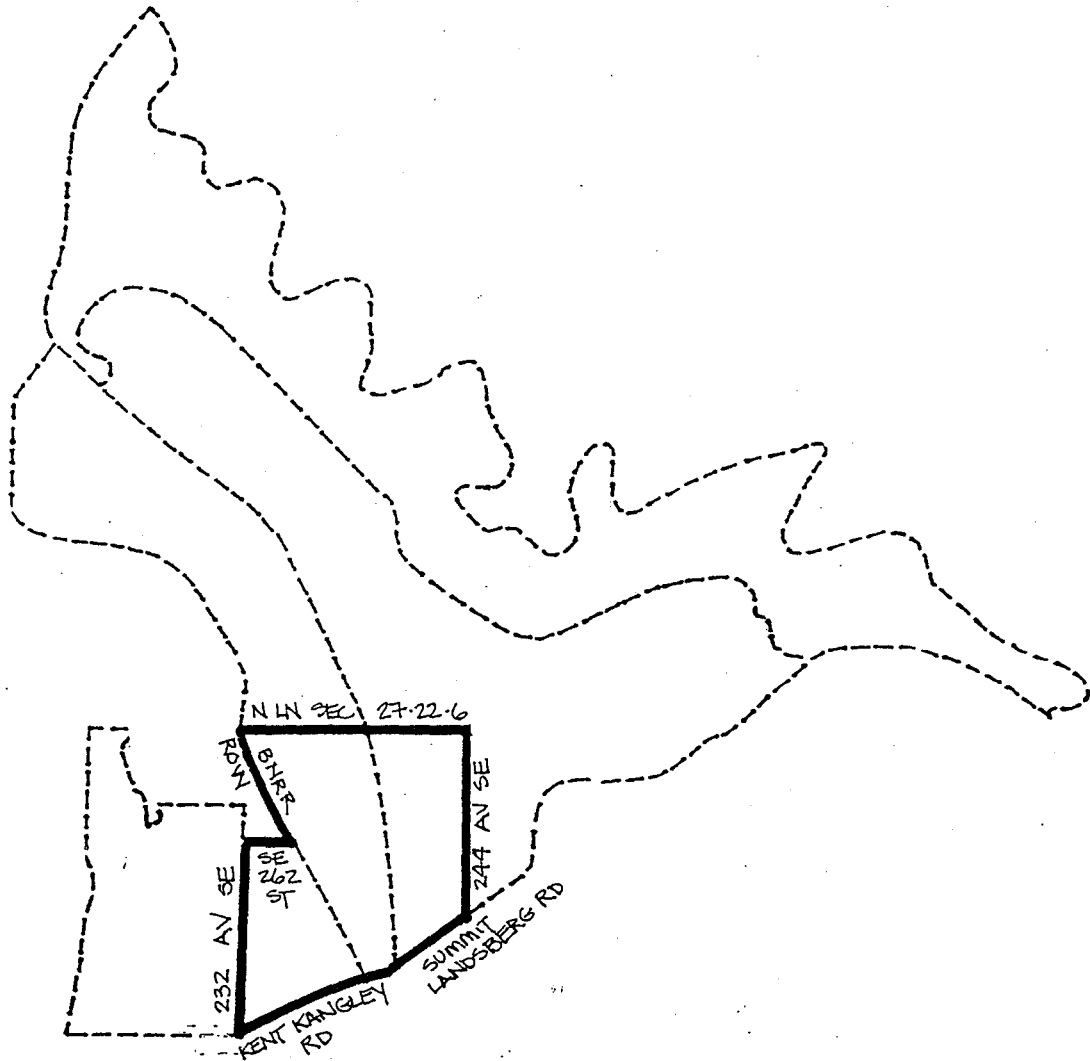
-  Legislative Bdy.
-  Congressional Bdy.
-  Council Bdy.
-  Proposed Precinct Bdy.
-  Existing Precinct Bdy.

Census TR	Block/BG	Kroll P.	S-T-R
320.03		B25	16-22-6



- A. CITY OF SEATTLE PIPELINE ROW
- B. WHITE RD SE
- C. BNRR ROW
- D. MAPLE VALLEY CORP BDY
- E. CITY OF SEATTLE CEDAR R. PIPELINE
- F. LAKE YOUNG PIPELINE RD
- G. SE 236 PL
- H. 225 AV SE

12721



# 1997 PRECINCT ALTERATION

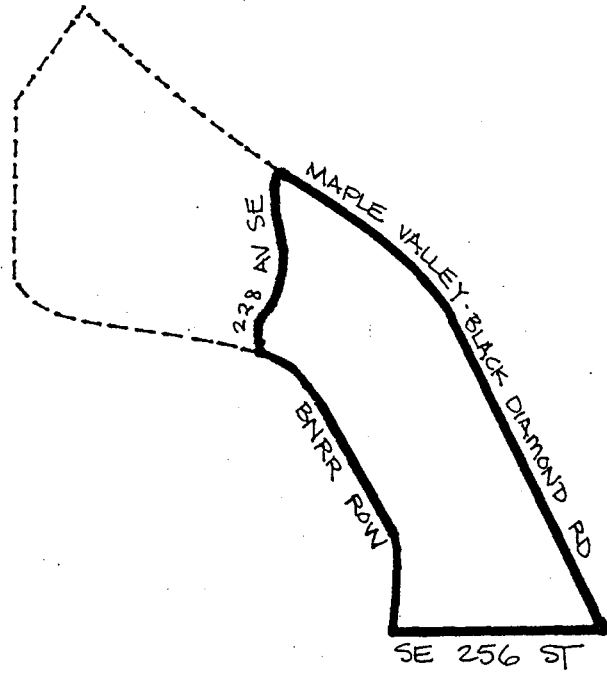
Code	Precinct Name	LG	CG	CC	JU
3368	N-V 05-3368	5	8	12	AU
2857	FERNWOOD	5	8	12	AU
3245	ROCK CREEK	5	8	12	AU
3294	BUTTERROOT	5	8	12	AU

**LEGEND:**

- Legislative Bdy.
- Congressional Bdy.
- Council Bdy.
- Proposed Precinct Bdy.
- Existing Precinct Bdy.

Census TR	Block/BG	Kroll P..	S-T-R
316		B25	27-22-6





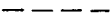
12221



# 1997 PRECINCT ALTERATION

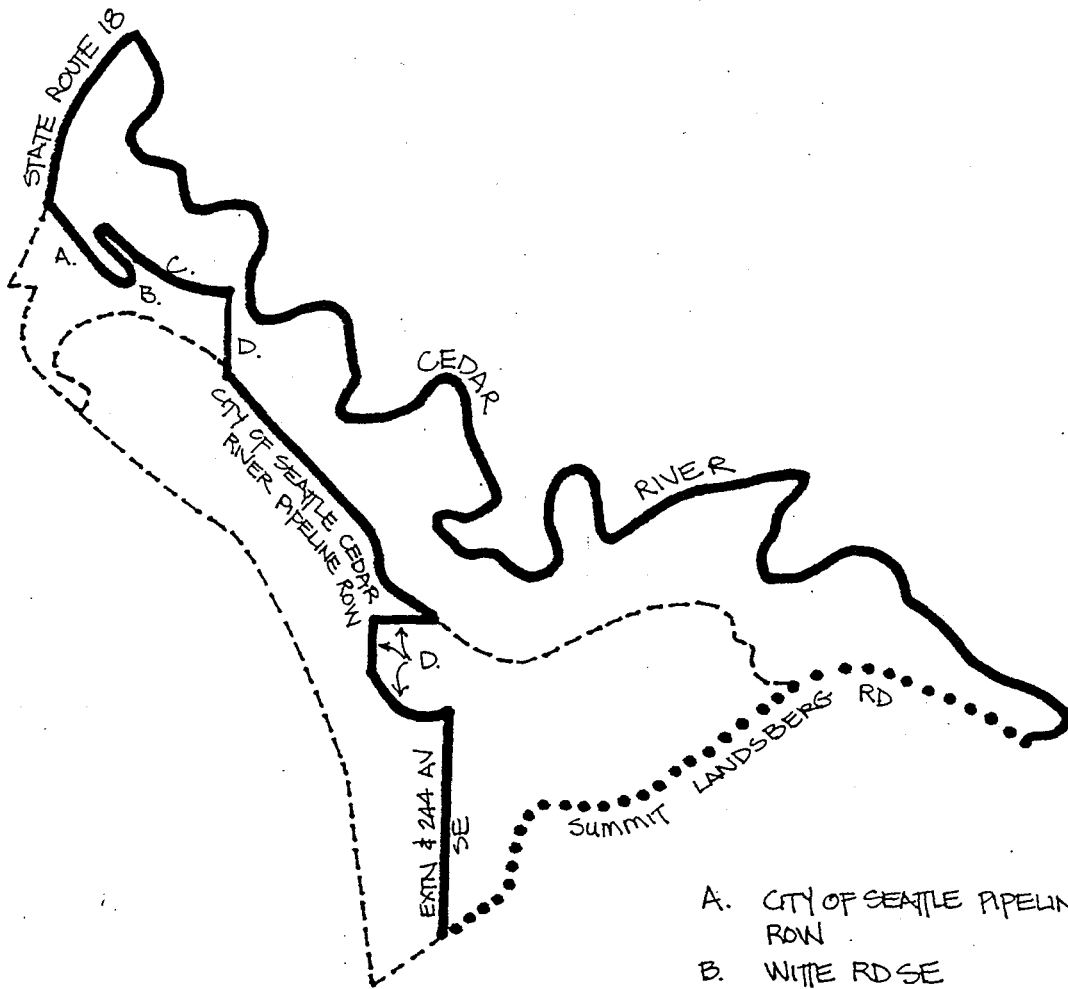
Code	Precinct Name	LG	CG	CC	JU
3245	M-V 05-3245	5	8	12	AU
3245	ROCK CREEK	5	8	12	AU

**LEGEND:**

-  Legislative Bdy.
-  Congressional Bdy.
-  Council Bdy.
-  Proposed Precinct Bdy.
-  Existing Precinct Bdy.

Census TR	Block/BG	Kroll P..	S-T-R
320.04		B25	22-22-6

12721



- A. CITY OF SEATTLE PIPELINE ROW
- B. WHITE RD SE
- C. BNRROW
- D. MAPLE VALLEY CORP BDY

# 1997 PRECINCT ALTERATION

Code	Precinct Name	LG	CG	CC	JU
3294	BITTERROOT	5	8	12	AW
3294	BITTERROOT	5	8	12	AW
2400	FIRLAND *	5	8	12	AW

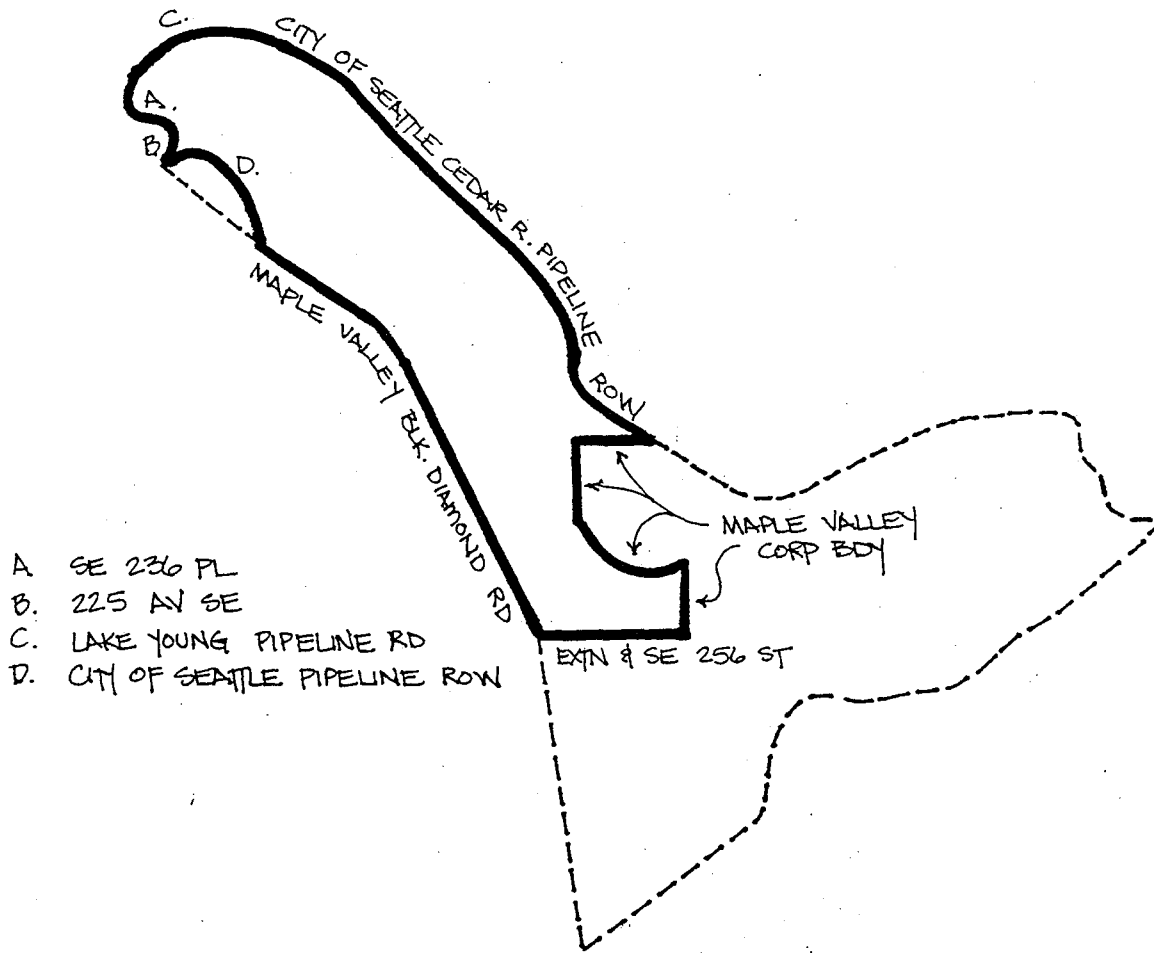
**LEGEND:**

- Legislative Bdy.
- Congressional Bdy.
- Council Bdy.
- Proposed Precinct Bdy.
- Existing Precinct Bdy.

Census TR	Block/BG	Kroll P.	S-T-R
320.03		B25	23.22.6

12771





# 1997 PRECINCT ALTERATION

Code	Precinct Name	LG	CG	CC	JU
3373	M-V 05-3373	5	8	12	AU
3294	BITTERROOT	5	8	12	AU

**LEGEND:**

- Legislative Bdy.
- Congressional Bdy.
- .....** Council Bdy.
- Proposed Precinct Bdy.
- Existing Precinct Bdy.

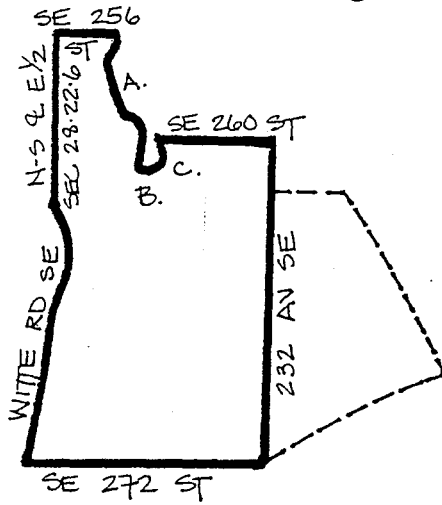
Census TR	Block/BG	Kroll P..	S-T-R
320.04		B 25	22-22-6

12221

# 1997

## PRECINCT ALTERATION

- A. 226 PL SE
- B. SE 263 PL
- C. 228 AV SE



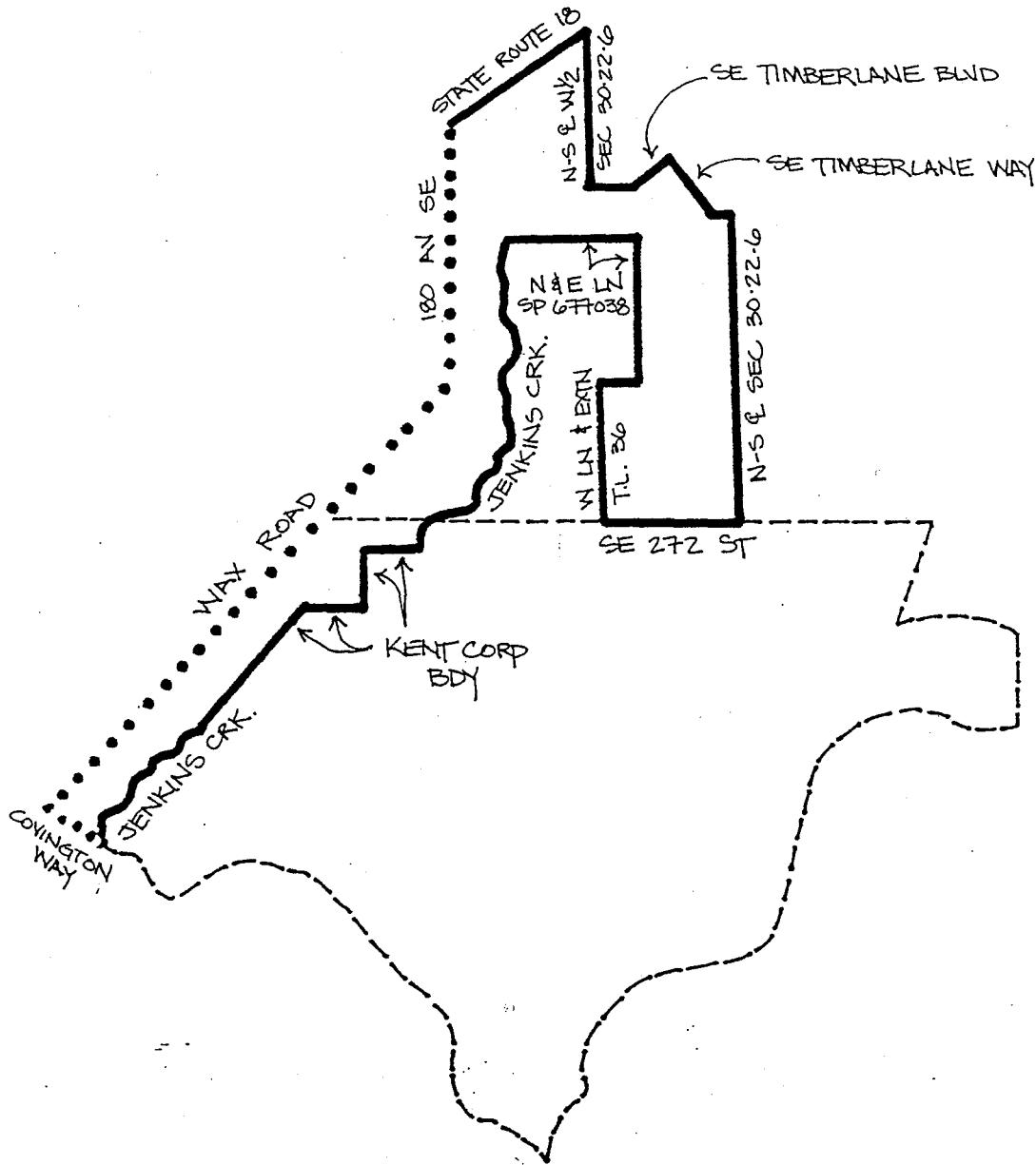
Code	Precinct Name	LG	CG	CC	JU
2857	M-V 05-2857	5	8	12	AU
2857	FERNWOOD	5	8	12	AU

### LEGEND:

- Legislative Bdy.
- Congressional Bdy.
- .....** Council Bdy.
- Proposed Precinct Bdy.
- Existing Precinct Bdy.

Census TR	Block/BG	Kroll P.	S-T-R
316		B25	27-22-5

12221



# 1997 PRECINCT ALTERATION

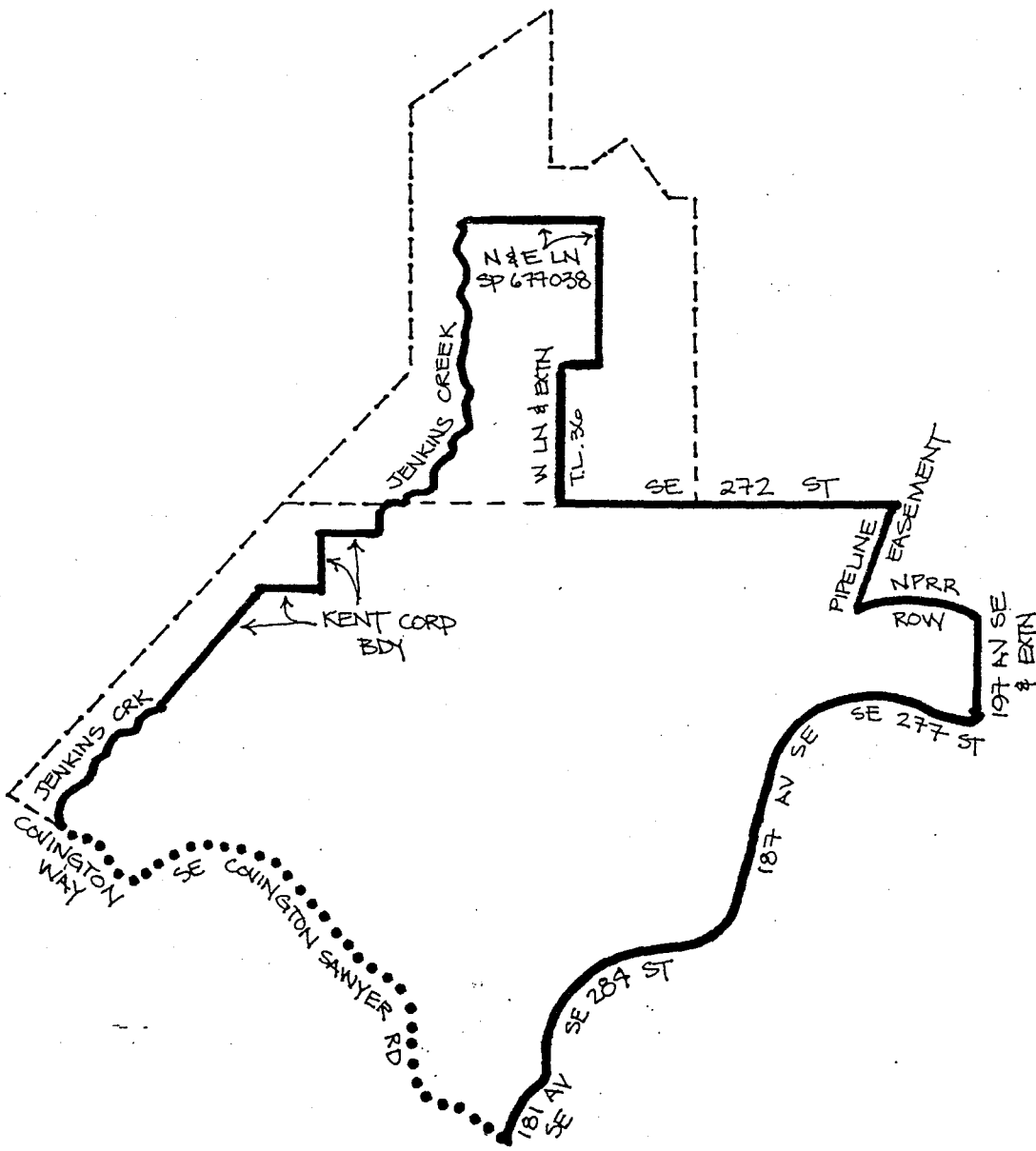
Code	Precinct Name	LG	CG	CC	JU
1153	COV 47-1153	47	8	12	AU
1153	TIMBERLANE	47	8	12	AU
2846	WINTERWOOD	47	8	12	AU

**LEGEND:**

- Legislative Bdy.
- Congressional Bdy.
- Council Bdy.
- Proposed Precinct Bdy.
- Existing Precinct Bdy.

Census TR	Block/BG	Kroll P.	S-T-R
320.05		658	30-22-6

12221



# 1997 PRECINCT ALTERATION

Code	Precinct Name	LG	CG	CC	JU
2846	WINTERWOOD	47	8	12	AU
2846	WINTERWOOD	47	8	12	AU
1153	TIMBERLANE	47	8	12	AU

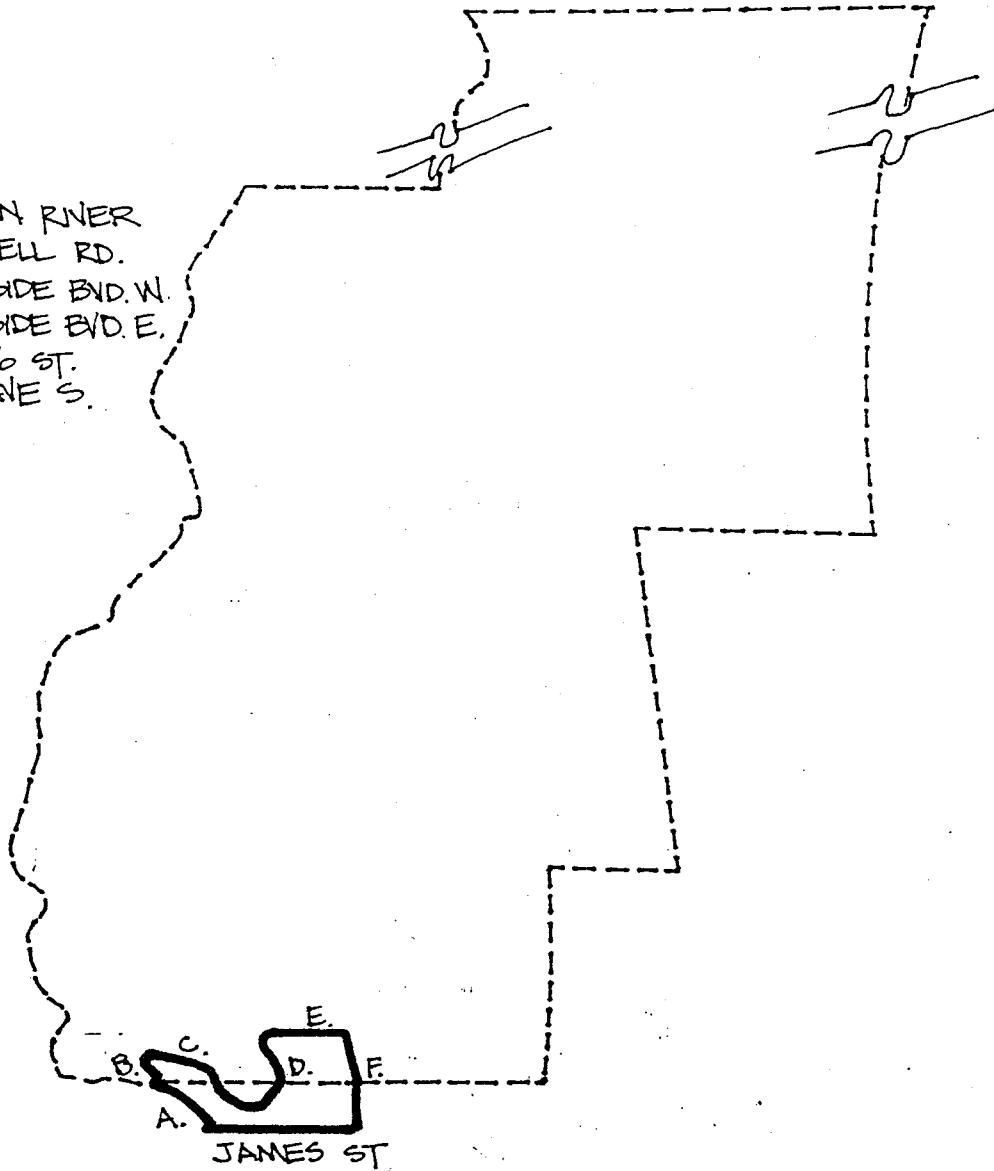
**LEGEND:**

- Legislative Bdy.
- Congressional Bdy.
- Council Bdy.
- Proposed Precinct Bdy.
- Existing Precinct Bdy.

Census TR	Block/BG	Kroll P.	S-T-R
370-06		663	36-22-5

12221

- A. GREEN RIVER
- B. RUSSELL RD.
- C. LAKESIDE BVD. W.
- D. LAKESIDE BVD. E.
- E. S 236 ST.
- F. 64 AVE S.



# 1997 PRECINCT ALTERATION

Code	Precinct Name	LG	CG	CC	JU
3232	KEN 33-3232	339	13	AU	
3232	KEN 33-3232	339	13	AU	
0586	KEN 33-0586	339	13	AU	

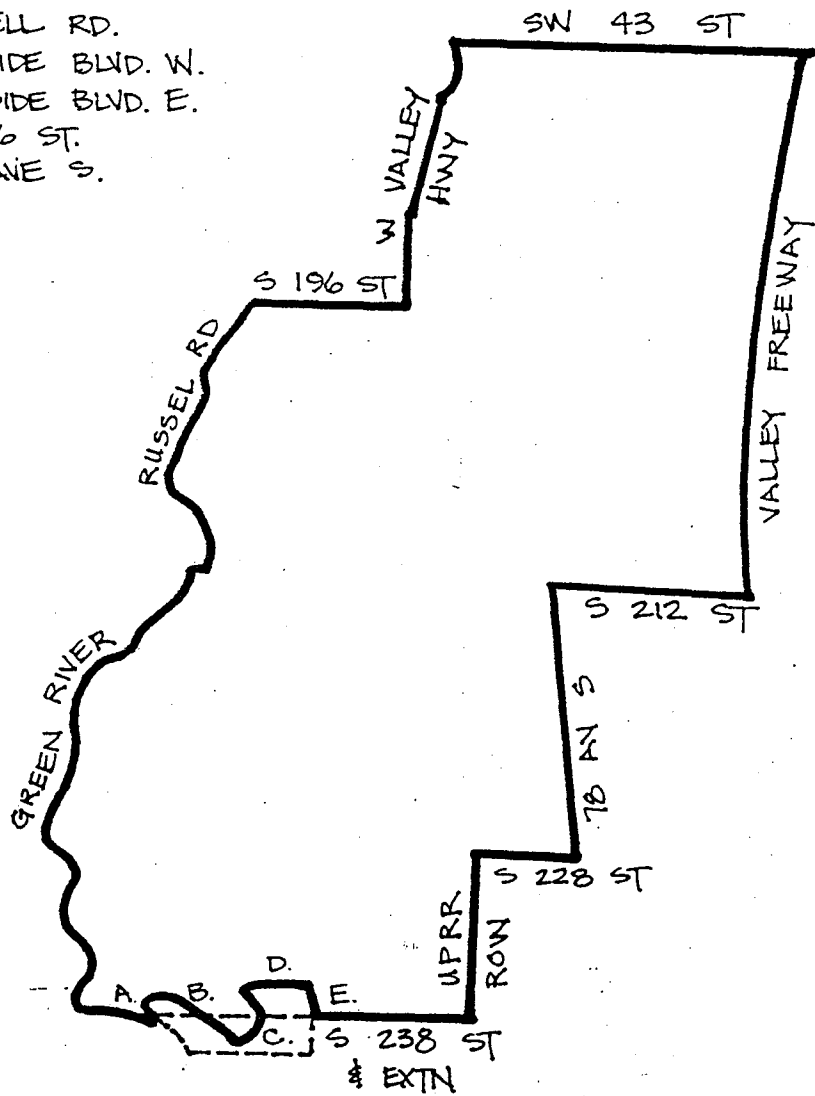
**LEGEND:**

- Legislative Bdy.
- Congressional Bdy.
- Council Bdy.
- Proposed Precinct Bdy.
- Existing Precinct Bdy.

Census TR	Block/BG	Kroll P..	S-T-R
292.01		616	14-22-4

12721

- A. RUSSELL RD.
- B. LAKESIDE BLVD. W.
- C. LAKESIDE BLVD. E.
- D. S. 236 ST.
- E. 64 AVE S.



# 1997 PRECINCT ALTERATION

Code	Precinct Name	LG	CG	CC	JU
0586	KEN 33-0586	33	9	13	AU
0586	KEN 33-0586	33	9	13	AU
3232	KEN 33-3232	33	9	13	AU

**LEGEND:**

- Legislative Bdy.
- Congressional Bdy.
- Council Bdy.
- Proposed Precinct Bdy.
- Existing Precinct Bdy.

Census TR	Block/BG	Kroll P.	S-T-R
29201		616	14-22-4

12721